

1988/3  
Special Issue on  
1988 National Elections

**GALLUP**

**POLITICAL WEATHER REPORT**

*November 1988*

This report is based on Gallup Exit Poll Survey  
conducted on the polling day for  
National Elections: November 16, 1988



This study has been prepared under the direction of Dr. Ijaz Shafi Gilani who holds a PhD in Political Science from the Massachusetts Institute of Technology, and is Chairman of Gallup Pakistan (Pakistan Institute of Public Opinion). Dr. Gilani has conducted several pioneering studies on Pakistan's economy and society.

## C O N T E N T S

### **SUMMARY OF FINDINGS**

### **ELECTION DATA**

1988 Elections: A Close Contest

### **DETERMINANTS OF VOTER BEHAVIOUR**

The Role of Past Legacy

The Role of Age, Literacy and Income

The Role of Party, Personality and "Biradri"

Appeal of Party Themes

Leanings of Independents / Other Voters

### **PROSPECTS FOR DEMOCRACY**

PPP and IJI Represent a National Cross-Section

### **Appendix 1: Seat-wise Results of 1988 Elections**

### **Appendix 2: Sample Composition**

## SUMMARY OF FINDINGS

The 1988 Elections in Pakistan were undisputedly a very close contest, and they remained rather unpredictable until the very last moment. According to the final results, the PPP obtained 39 percent of votes, while its major competitor IJI received 32 percent. The number of parliamentary seats won by the two parties in a house of 207 were: PPP: 93; IJI: 55. The single constituency system does not provide for a direct relationship between votes polled and seats obtained; the number of candidates for a seat, besides an element of chance can play a decisive role in the final outcome of the elections. Fortunately, the anomalies of the single constituency system equally hurt or helped the two major parties in the recent elections in Pakistan. PPP was the beneficiary in the National Elections and so was IJI in the important electoral contest in the Punjab Assembly. Data highlighting this feature of the election is given in the text ahead.

The main thrust of this research study, however, is in presenting the findings of an Exit Poll Survey, conducted by Gallup Pakistan with a nationally representative sample of 3075 men voters. They were interviewed as they stepped out of the polling stations after casting their ballot. The survey predicted the outcome within 2 percentage of actual results and its sample can therefore be regarded as a fair representation of the men who voted on November 16 for Pakistan National Assembly.<sup>1</sup>

The purpose of the survey was to answer the question: who voted for whom? The aggregate results of elections do not explain the voting preferences of different age, income, education or other segments of the society separately. It is in these respects that the findings of the Gallup Exit Poll Survey would make a useful contribution.

According to the findings of this study, the two principal parties in the contest, PPP and IJI, are not markedly different from, each other in the socio-economic composition of their voters. In other words both of them have drawn their support from the mainstream of the society. It is true that each one of them has a degree of advantage over the other in certain segments of the social strata, but they are both represented across them. This is certainly a healthy development for future prospects of democracy in the country. The only exception to this statement is the province of Sind, about which more is said in the text of the study.

Having said this, we find that PPP's edge over IJI came mainly from the illiterate, low income and the younger voters. The PIT was successful in convincing its voters that it was the "party of the poor". Approximately 40 percent of those who voted for PPP described this to be the reason why they voted for her. The survey also shows that Benazir Bhutto was successful in inheriting the charisma of her father. While 18 percent said they voted for PPP because it was the party of "Zulfikar All Bhutto" a slightly higher number (22%) held the view that they were voting for PPP because Benazir Bhutto was a capable leader. The anti

---

<sup>1</sup> An Exit Poll Survey conducted by Gallup Pakistan was able to predict the actual outcome within 2 percent of error. Its results were: PPP: 37%, IJI: 32%, All Others: 31%. In a vast country like Pakistan and its logistical problems, we were rather pleased with getting so close to accuracy.

Zia sentiments did not appear to be very pronounced in the minds of those who voted for PPP. Only 8 percent described that to be their motive for choosing PPP on the ballots."

Leaving aside the province of Sind, the total votes polled by PPP were barely equal to the total votes polled by the IJI (nearly 5.7 million by each). But PPP acquired an enormous advantage of nearly 1.3 million votes over IJI in the province of Sind alone, which provided her the cutting advantage of 7% in the entire country. IJI's slight numerical advantage over PPP in all of Pakistan, except Sind, was reflected in the results of the three provincial assemblies where it secured more seats than the PPP. In the final analysis, elections in Sind became pivotal to the outcome of the 1988 elections.

Outside Sind, IJI attracted voters from all segments of the society, and provided strong competition to the PPP across them. IJI's principal appeal to the voters was its "Islamic image". 36 percent of those who voted for IJI described it as "more Islamic than the PPP". IJI also had the advantage of being in competition with a party which was led by two women, seen by many as "weak". 24 percent of those who voted for IJI chose their side because its leadership was "strong and manly". IJI's stand on certain foreign policy issues including Afghanistan, Kashmir and nuclear capability proved

to be attractive to a good section of its voters (22%). Interestingly, there were not many among the voters of IJI who were attracted to it because "that would be the best way to stop PPP from coming back to power" (10 %). This is not to say that past memories did not play a role. IJI was quite successful among those voters who had lived through an earlier Bhutto regime, and many amongst them appeared to have been influenced by the IJI's criticism of that period. Among those who were of voting age in 1970 and had voted in that election, the IJI was ahead of PPP by 5 percent. Were it not for the younger and new members of the electoral stream, PPP would find it difficult to obtain a plurality in the national assembly.

While 39 percent of voters described party loyalty as a key consideration in determining their preference, a larger number ascribed their decision to other considerations. 41 percent regarded the personal qualities of a candidate more important than his party association. 12 percent said their preference on the ballot was determined by the decision of their "biradri", or clan.

By way of comparison, the PPP voters attached more importance than the IJI voters to their association with the party. (58% to 38%). This was to be expected because IJI was only a recently formed election alliance.

The independent candidates and smaller parties emerged as an important element in the outcome of the elections. Together they secured 29 percent of polled votes, almost equally divided between independent candidates and smaller regional and religious parties. The fact that they were successful in Pakistan's "first past the post" electoral system rather than "wasting" their votes significantly hurt the two major parties. In 1970, PPP was able to win 60 percent of seats by securing 39 percent of votes. In 1988, an identical 39 percent of votes enabled her to win only 46 percent of seats in the national parliament. The IJI was also hurt by the successful showing of the independents and smaller parties. The data show that the

voters of independents and smaller parties were inclined by a ratio of nearly 1: 4 in favour of IJI as opposed to the PPP.

It is hoped that further analysis of these data and their comparison with findings from previous surveys will help us analyze for our readers the larger term trends of Pakistan's political climate. This will be the best reward for a rather formidable task of interviewing a scientific sample of several thousand voters on the polling day, in a developing country like ours.

## Section 1

# **ELECTION DATA**

## Section 1

### **ELECTION DATA**

#### **1988 ELECTIONS: A CLOSE CONTEST**

As predicted by most analysts the 1988 elections turned out to be a very close contest, between the PPP and the IJI. The PPP polled 39 percent of votes all over the country and IJI received 32 percent. As a closely contested race, the situation remained unclear until the very last moment. In a Gallup poll conducted five days prior to the elections, the PPP was trailing behind IJI by nearly 6 percentage points, largely because it lagged behind IJI in Punjab. However, the race was too close to call, since 16 percent of voters at that point were still undecided.

Apparently the rallies of Ms. Benazir Bhutto during the closing four days of the campaign in Key towns of Punjab provided her party the necessary sprint to edge ahead of IJI at the finishing point. The last minute PPP effort brought it literally neck to neck with the IJI in Punjab : Both of them secured 40 percent each of total votes polled in that province, which accounts for 115 in a total contest for 207 seats.

In the single constituency system of Pakistan's parliamentary democracy, equal votes do not necessarily mean equal seats. Thus with 40 percent votes for each, the PPP won 7 more Punjab seats than IJI in the National Assembly (52 : 45).

The PPP completely swept rural Sind and won all but one of its 31 seats, besides winning 2 seats in Urban Sind. It thus achieved a lead of 38 seats over IJI in the entire country (93 : 55). The total votes secured by PPP in all of Pakistan, except Sind, were barely equal to the tally for IJI.

The amusing features of a closely contested race in the parliamentary system were repeated three days later in the elections for the provincial assemblies. In Punjab, both of the leading parties, PPP and IJI, polled equal votes: 33 percent each. But, this time the IJI won 14 seats more than PPP (108 : 94).

Thus, despite achieving a plurality in the centre, the PPP polled fewer seats than its rival IJI in three out of four provincial assemblies. This made PPP's claim to form a government on its own somewhat contested.

What factors determined voter preferences in this highly competitive election?

An attempt has been made to examine this through the findings of a Exit Poll Survey conducted by Gallup Pakistan. The survey comprised of interviews with a representative sample of 3057 voters as they were coming out of the polling booths, all over the country. The findings of the survey are presented in the following section of this Report.



Table 1

**NATIONAL ELECTION RESULTS  
 1988**

	PPP		IJI		All Others	
	Seats	% Votes	Seats	% Votes	Seats	% Vote
All Pakistan	93	39%	55	32%	57	29%
Punjab*	53	40%	45	40%	16	20%
Sindh	31	46%	0	15%	15	39%
NWFP**	9	23%	8	25%	9	52%
Balochistan	1	7%	2	20%	8	73%

\* Including Federal Area Islamabad seat

\*\* Excluding 8 Fata Seats

Table 2

**NATIONAL ELECTION RESULTS  
 1988**

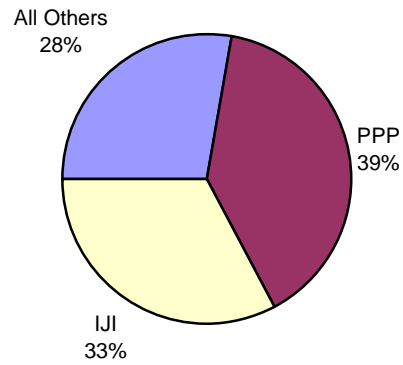
	PPP		IJI		All Others	
	Seats	% Votes	Seats	% Votes	Seats	% Vote
Punjab Assembly	94	33%	108	33%	38	34%
Sind Assembly	67	45%	1	7%	32	48%
NWFP Assembly	20	20%	28	25%	29	55%
Balochistan Assembly	3	11%	8	23%	23	66%

- Election to an NWFP seat was not held because of the death of a candidate

- Results from two NWFP and six Balochistan seats will be declared later

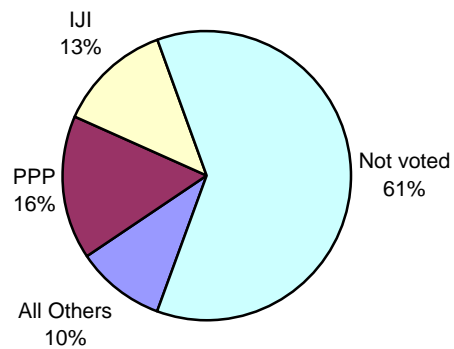
## SHARE OF VOTES AMONG THOSE WHO VOTED

### 1988 Election Results



## SHARE OF VOTES AMONG ALL VOTED

### 1988 Election Results



## Section 2

# **DETERMINANTS OF VOTER BEHAVIOUR**

## Section 2

### **DETERMINANTS OF VOTER BEHAVIOUR**

The findings of an Exit; Poll Survey, conducted by Gallup Pakistan, on the election day, show that old loyalties and memories of the past played a key role in voter choices in the 1988 elections.

The data show that PPP, which emerged as the largest single party in the parliament, but fell short of achieving a majority, was hurt by the legacy of the past. Were it not for the younger cohorts who entered the voting stream after 1970, the PPP would find it difficult to win its plurality in the house.

The following data are indicative. The data are based on a sample which closely approximates the actual election results, and are representative of the 1988 voters.

#### **THE ROLE OF PAST LEGACY**

The PPP out performed the IJI by a margin of 12% among those who had not voted in 1970, largely because they were too young then to vote. But, it lagged behind IJI by a margin of 5% among those who were of voting age and had cast their ballot in 1970.

Table

#### **THE ROLE OF PAST LEGACY**

*Percent of votes polled in 1988*

	<b>PPP</b>	<b>IJI</b>
Among Voters of 1970	31	37
Among non-Voters of 1970	37	28

Old loyalties remained quite resilient. This was slightly more true for the IJI loyalists than for the PPP partisans, 61 percent of those who had voted for PPP in 1970, cast their vote again in its favour eighteen years later in 1988. 18 percent switched over to the IJI, while the remaining were split between independents *and* minor parties.

The cross-over from the component parties of IJI was even less significant. Only 10 percent of those who had voted for IJI in 1970 switched over to the PPP in 1988.

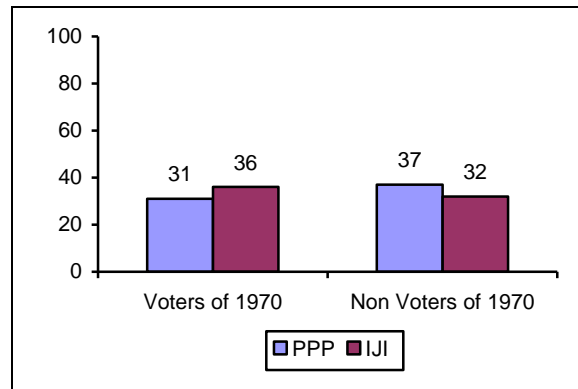
Table

**INFLUENCE OF 1970 AND 1977 LOYALTIES ON VOTING PATTERN IN 1988**

**Question:** (If you had voted) Who did you vote for in (a) 1970 (b) 1977

	PPP	IJI	Other/No Opinion
<b>Among those who voted in 1970 for</b>			
PPP	60	16	24
ML	12	63	25
JI	8	62	30
Non voters	40	28	32
<b>Among those who voted in 1977 for</b>			
PPP	70	14	16
PNA	11	55	34
Non voters	36	27	27

**Legacy of the Past & Voter Preferences**



**THE ROLE OF AGE**

The younger cohort of voters, under the age of 40, who had mostly entered the voting stream after 1970 elections played a decisive role in PPP's edge over its rival IJI in the national elections. In particular, voters between the ages of 21 - 30, played a vital role. PPP's edge over IJI in this age group was much wider than in the rest of the voters. Moreover, the turnout on the polling day in this age group was higher than the average, which gave them an enhanced role in deciding the final outcome of a rather closely contested elections.

The question arises: Why did the IJI perform relatively poorly among voters under the age of 30?

The answer to this question would be a matter of speculation. But one plausible answer was that the younger voter could not emotionally respond to the IJI electoral themes which emphasized the excesses of an earlier Bhutto regime, and the role of PPP's political ambitions in the break up of a united Pakistan. Those between the age of 21 -30 were too young in 1970 to personally identify with the events of that period.

Table

**ROLE OF AGE**

*Percentage voting for*

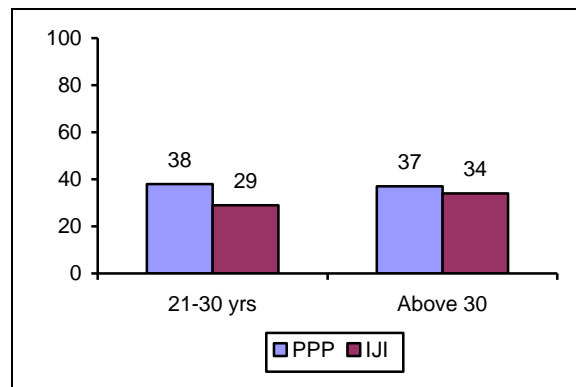
	PPP	IJI
<b>Age-wise</b>		
21-30	38	29
31 and above	37	34

Table

**TURN-OUT AMONG DIFFERENT AGE GROUPS**

Age Group	Qualified to Vote	Turn out
	<i>(Percentage share among those over the age of 21)</i>	<i>(Percentage share among those who voted in 1988 National Assembly elections)</i>
21-30	28	35
31-40	21	26
41-60	35	32
60 and above	16	7

**Age and Voters Preferences**



## THE ROLE OF LITERACY

PPP had a substantial edge of 16% over IJI among the illiterate section of the population. And since illiterates account for nearly half of male adults over the age of 21, and nearly one third among those who voted on November 16, an edge among them was crucial in the final outcome of the elections. Among the literate voters, the PPP and IJI polled just about equal share of votes.

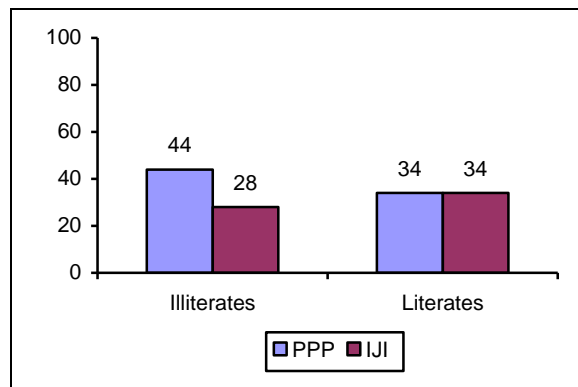
Further analysis shows that IJI's performance was better than that of PPP among those with education upto high school. But, it did poorer than PPP among illiterates on one end of the spectrum and those with college education on the other.

Table

### ROLE OF LITERACY

	<i>Percentage Voting for</i>	
	PPP	IJI
<b>Education-wise</b>		
Illiterates	44	28
Literates	34	34
<b>Education Group-wise</b>		
Illiterate	44	28
Primary	32	33
Middle	34	40
Matric	34	37
Intermediate	38	28
Graduate or above	35	28

### Literacy and Voters Preferences



## THE ROLE OF INCOME

The role of income group *in* explaining voter preferences turned out to be nearly as strong as that of literacy. PPP's edge over IJI in the lowest income group was clearly more pronounced than its edge in the rest of the population.

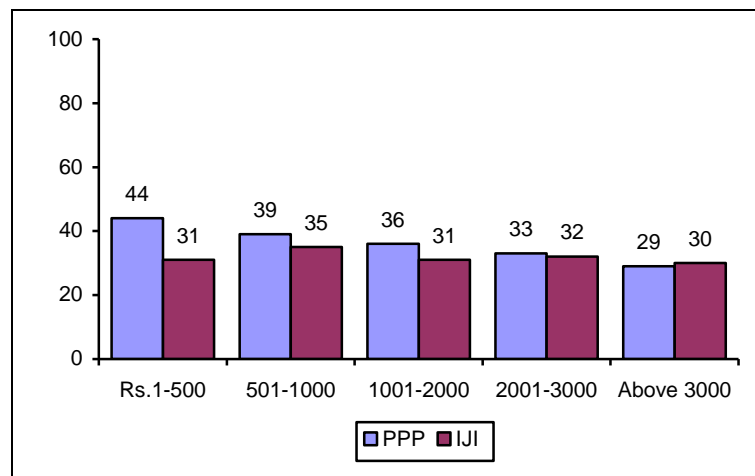
Table

### ROLE OF INCOME

*Percentage Voting for*

	PPP	IJI
<b>Income-wise</b>		
Rs.1-500	44	31
Rs.501-1000	39	35
Rs.1001-2000	36	31
Rs.2001-3000	33	35
Rs.3000 and above	29	35

### Income and Voter Preferences





## THE ROLE OF PARTY PERSONALITY AND BIRADRI

Voters were almost equally divided (39% and 41% respectively) between those who attributed their choice to a liking for the party of the candidate for whom they were voting and those who said they were attracted to the candidate due to his personal qualities.

12 percent said they had made their choice in accordance with the decision of their Biradri (or clan).

Table

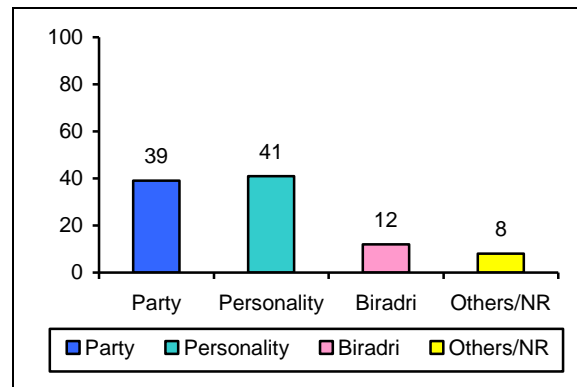
### ROLE OF PARTY PERSONALITY AND BIRADRI

**Question:** What was your principal reason to vote for the person you chose just now in the National Assembly contest? Was it because of party affiliation, personal qualities of the candidate or as a result of your biradri's (Clan) decisions?

*Percent of Respondents*

	Party	Personality	Biradri	Others/No Opinion
<b>All Pakistan</b>	<b>39</b>	<b>41</b>	<b>12</b>	<b>8</b>
<b>Party affiliation-wise</b>				
Among PPP voters	52	28	14	5
Among IJI voters	38	44	9	9
Among independents and minor party voters	26	52	13	9
<b>Income-wise</b>				
Rs.1-500	30	48	14	7
501-1000	41	40	12	7
1001-2000	39	39	14	9
2001-3000	42	42	7	9
3000 and above	42	37	10	11

### Party, Personality & Biradri



## APPEAL OF PARTY THEMES

### AMONG VOTERS OF PPP

A majority of those who voted for PPP said they voted for it because they believed "it was party of the poor" (42%). This was followed by the attraction of the two PPP personalities, the father and the daughter Bhutto. 22 percent said they were persuaded to vote for PPP because they believed Benazir was a capable leader. 18 percent said they voted for PPP because it was the party of the late Zulfikar Ali Bhutto.

8 percent of those who voted for PPP described resentment for the Zia regime as their major cause to vote for PPP. 10 percent were unable to give a specific answer.

Table

### THEMES WHICH APPEALED TO PPP VOTERS

**Question:** (only for those who voted for Arrow/PPP) Show Card and ask) Peoples Party had given several arguments in its favour. Which of those appealed to you the most, and persuaded you to vote for it? (give only one answer)

*Percent of Respondents*

	Poor's Party	Benazir's leadership	Bhutto party	Anti Zia	Other/No Responses
<b>All Pakistan</b>	<b>42</b>	<b>22</b>	<b>18</b>	<b>8</b>	<b>10</b>
<b>Income-wise</b>					
Rs.1-500	48	26	8	7	12
501-1000	41	21	17	8	12
1001-2000	42	18	26	5	9
2001-3000	38	24	16	15	7
3000 and above	38	31	19	5	8
<b>Language-wise</b>					
Urdu	39	25	15	5	16
Punjabi	46	30	14	3	7
Sindhi	30	15	31	13	10
Pushto	48	19	19	9	5

## AMONG VOTERS OF IJI

The Islamic image of the IJI appeared to be its principal attraction to those who voted for it. 36 percent of the voters of IJI said they voted for IJI because it seemed to them more Islamic than the PPP. The second most popular theme was: "IJI's leadership was stronger and manly" (24%). Two foreign policy themes in IJI rallies, that is, the Kahuta (nuclear) issue, and Afghanistan-Kashmir issue appealed to 10% and 12% of the voters respectively. 10 percent of IJI voters said they voted for it in order to prevent PPP from coming back to power.

Table

### THEMES WHICH APPEALED TO IJI VOTERS

**Question:** (only for those who voted for Cycle/IJI) Show Card and ask) Peoples Party had given several arguments in its favour. Which of those appealed to you the most, and persuaded you to vote for it? (give only one answer)

*Percent of Respondents*

	More Islamic	Strength/ Men leaders	Afghan Kashmir Issue	Kahuta Issue	Anti PPP	Other Responses
<b>All Pakistan</b>	<b>36</b>	<b>24</b>	<b>12</b>	<b>10</b>	<b>10</b>	<b>8</b>
<b>Income-wise</b>						
Rs.1-500	47	21	9	5	7	10
501-1000	35	35	11	8	5	5
1001-2000	40	19	14	8	13	7
2001-3000	28	18	18	25	7	4
3000 and above	24	12	13	13	22	15
<b>Language-wise</b>						
Urdu	32	17	16	12	15	8
Punjabi	40	23	13	10	10	5
Sindhi	34	15	7	14	15	15
Pushto	35	23	5	19	7	10

## LEANINGS OF INDEPENDENTS AND SMALLER PARTY VOTERS

The outcome of the 1988 elections was split in three different directions: PPP, IJI and independents/smaller parties. PPP received 39 percent of votes, IJI received 32 percent and the remaining 29 percent went to smaller parties and independents. The party position was as follows:

Table

### RESULTS OF 1988 NATIONAL ELECTIONS

	Seats	% share in votes
PPP	93	39%
IJI	55	32%
Independent and smaller parties	57	29%

With this break-down, the role of the smaller parties and independents became extremely crucial in the final formation of a government. While the decision to enter into coalitions would quite legitimately be determined by the elected leaders themselves, and not their electorate, it would be interesting to read their leanings. This should be possible to analyze through their answer to a survey question regarding their preference for the future Prime Minister.

The question listed prominent, leaders of PPP and IJI and asked voters, as they were leaving after casting their ballot, who would they wish to see as the future Prime Minister of the country.

Naturally, the PPP and IJI voters overwhelmingly opted for their own leadership to head a future government. But, the voters of independents and smaller parties showed a strong tilt in favour of IJI leadership. In a way this should not be surprising, because the independent candidates and supporters of religious parties had generally attracted voters from the anti PPP constituency.

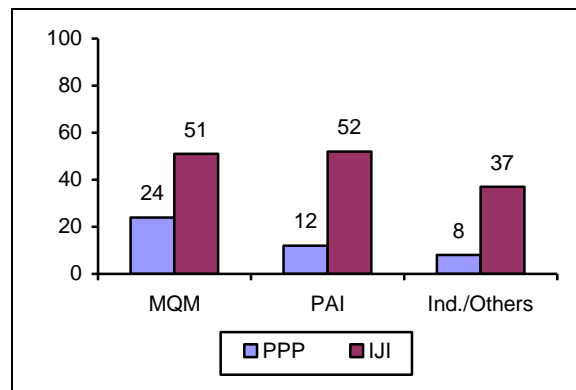
Table

### INDEPENDENTS AND SMALLER PARTY VOTERS

**Question:** (*show card and ask*) If you were to choose one of these six persons to be the next prime minister of the country, who would you choose: Benazir Bhutto, Nawaz Sharif, Nusrat Bhutto, Mohammad Khan Junejo, Qazi Hussain Ahmed, Ghulam Mustafa Jatoi?

	PPP leadership	IJI leadership	Ratio between supporters of PPP and IJI
<b>Among Voters of</b>			
MQM	24	51	1 : 2
PAI	12	52	1 : 4
Independent and smaller parties	8	37	1 : 5

**CHOICE OF PRIME MINISTER**  
**Leanings of Independents & Others**



**PROSPECTS FOR DEMOCRACY:**  
**PPP and IJI REPRESENT A NATIONAL CROSS-SECTION**

One of the key findings of this study is that voters of the two principal parties, PPP and IJI, come from a cross-section of the entire society and its socio-economic strata. The only exception is the Sindhi speaking population whose loyalties are highly skewed in favour of PPP, with the virtual exclusion of IJI from an important linguistic group in the country. Other than that, while the two parties have an edge in one or another segment of the socio-economic strata, they are both fairly well represented across them. Political analysts would regard this as a healthy sign for the prospects of democracy in this country. Voting preferences of different: age, education and income segments of society, presented earlier in this paper, must be read in that context.

The following data on the composition of the voters of PPP and IJI show that both of them are well represented across different segments of the society, with the exception of the Sindhi speaking Pakistanis.

Table

**PROFLE OF OTERS OF PPP AND IJI**

	Composition of PPP Voters	Composition of IJI Voters
<b>Age Composition</b>		
21-30 years	35	32
31-40 years	26	27
41-50 years	20	23
51-50 years	13	11
Over 60 years	6	8
<b>Education Composition</b>		
Illiterate	39	28
Primary	13	15
Middle	15	19
Matric	16	20
Intermediate	9	8
Graduates	8	7
<b>Income Group</b>		
Rs.1-500	15	12
Rs.501-1000	34	35
Rs.1001-2000	29	28
Rs.2001-3000	11	12
Above Rs.3000	8	10
<b>Language Group Composition</b>		
Urdu	6	14
Punjabi/Sariki	54	70
Pushto/Hindko	12	10
Sindhi	23	4
Balochi/Others	5	2

## Appendix 1

# **SEAT-WISE RESULTS OF 1988 ELECTONS**

## ELECTION RESULTS NATIONAL ASSEMBLY 1988

**Source:** Preliminary Results released by the Chief Election Commissioner.

The results given below are still preliminary. There is also a slight possibility of misreporting or exclusion in the case of candidates who are relatively low on the rank order for votes in their constituency. But, the results are quite authentic for the principal candidates in the contest.

The number of valid votes polled by each candidate are mentioned against the person's name. Also given is the candidate's party affiliation; in some cases the party affiliation reported may not be accurate. Such errors will be corrected in a future version of the results, once the official data become available.

The constituency are listed according to their official serial number beginning with National Seat number 1 (NA-I).

<b>NA-1 PESAWAR</b>			<b>MA-5 CHARSADDA</b>		
AFTAB SHERPAO	PPP	44713	KHAN ABDULWALI KHAN	ANP	65031
GHULAM AHMAD BILOUR	ANP	35770	EHSAN ULLAH KHAN	IJI	33985
MOHAMMAD RAFIQUE	Indep	2255	MOHAMMAD NISAR	Indep	2140
SAID ANWAR	Indep	1826	TARIQ MAHMOOD	Indep	2103
<b>NA-2 PESHAWAR</b>			<b>NA-6 MARDAN</b>		
KHAN BAHADAR KHAN	PPP	24444	Haji MOHAMMAD YAOOOB	PPP	45980
ARBAB SAIF-UR-RAHMAN	ANP	19393	MOHAMMAD AZAM KHAN	ANP	32084
RAFIQ AHMAD KHALIL	Indep	10376	<b>NA-7 MARDAN</b>		
SALIM JAN KHALIL	JUI(F)	10BC	HAI MOHAMMAD AHMAO	JUI(F)	23497
MOHAMMAD FAYAZKHALIL	ANP(A)	1018	HAJI SARFARAZ KHAN	PPP	22573
ARBAB MOHAMMAD JAHANO'R KHALIL	IJI	840	MAULANA GOHAR-UR-REHMAN	UI	13499
<b>NA 3 PESHAWAR</b>			HAJI MOHAMMAD YUSUF KHAN	ANP	13131
SARDAR ALI KHAN	PPP	27U73	MISALKHAN	Indep	4361
AQOULLATIF	ANP	24371	MOHAMMAD AZHAR KHAN	PMKP	2946
PIRZADANAGIAMEEN	UI	23041	HAJIABDURRAHMAN	Indep	1195
Haji NOOR MOHAMMAD	Indep	463	<b>NA-8 SWABI</b>		
ARBASMOHAMMAOZAHIK	Indep	385	ABDUL KHALIO KHAN	ANP	39076
NISAR KHAN	Indep	244	MOLVI HAMDULLAH	UI	36707
<b>NA-4 PESHAWAR</b>			HAJIABOULMASTAN	PPP	33619
AHRARKHATTAK	ANP	27756	IFTIKHARAHMAD	Indep	22S4
MIAN MUZAFFAH SHAH	PPP	27672	ARSHAD ALI ADVOCATE	Indep	1825
MAULANA ANWAR UL-HAO	UI	16357	<b>NA-9 KOHAT</b>		
INAYATULLAH KHAN	PAI	458	MOLVINIAMAT-UL-LAH	UI	30518
OIL ARAM KHAN	Indep	375	SYEOIFTIKHARHUSSAINGILLANI	PPP	18957
NASRULLAH KHAN	indep	127	FEROOZ KHAN	Indep	14465
NA-10 KARAK			FAROOQ SHAH	ANP	10912
MALANA SHAHEED AHMED	JUI(D)	26143	SYED SEQLAIN	Indep	6201
MOHAMMAD ASLAM KHAN KHATTAK	IJI	19903	KAMIL-UR-RAHMAN	Indep	1216
MOHAMMAD FAROOQ	ANP	3877	KAZIM ALI	indep	367
RAZA KULI KHAN KHATTAK	PAI	670	SARDAR KHAN	Indep	351
MST. BAKHT BIBI	indep	644	AMJAD ALI KHAN SHINWARI	Indep	158
SABIR BADSHAH	Indep	181	<b>NA-17 KOHISTAN</b>		
M. YOUSUF KHATTAK	Indep	111	FAZL-E-HAQ	UI	5492
NA-11 ABBOTABAD			MOHAMMAD SI RAJ	ANP	3750
FAREED M. JADOON	indep	35531	ABDUL HANNAN	JUI(F)	3114
MALIK ABDUR RAUF	IJI	18114	SAID AHMAD MALIK	Indep	2543
SYED SULTAN ALI	ppp	13794	AURANG ZEB	indep	2219
AIR MARSHAL (RTD.) M..ASGHAR KHAN	PAI	10755	<b>NA-18 D.I. KHAN</b>		



SYED AMIR ALI SHAH	Indep	4104	MAULANA FAZAL-UR-REHMAN	JUI(F)	62520
JAMAL KHAN ABBASI	Indep	1950	FAZAL KARIM KHAN	IJI	35226
NAWAB KHAN JADOON	Indep	851	ASMATULLAH (2)	PAI	1 3 1 59
NA-12 ABBOTABAD			AMANULLAH KHAN SYED	Indep	6579
SARDAR HAJI GUL KHITAB KHAN	IJI	31380	HASSAN ALI KAZMI	TNFJ	916
HAJI JAVED IQBAL ABBASI	indep	25095	NA-19 BANNU		
AIR MARSHAL(RTD)M.ASGHAR KHAN	PAI	10858	MOULVI ALI AKBAR PIR	JUI(F)	1 9022
MOHAMMAD ASLAM KHAN	ppp	1 0624	SYED TAHIR ALI SHAH	IJI	12594
COL. ABDUL RAZZAQ	MM	1735	IRFANULLAH KHAN	ANP	6421
SARDAR HUKAMDAD KHAN	indep	968	ALAMGIR KHAN	Indep	5732
<b>NA-13 ABBOTABAD</b>			KHALIQ DAD KHAN	Indep	1836
RAJA SIKANDAR ZAMAN KHAN	IJI	59337	JEHANGIR KHAN	indep	1748
BEGUM BILQEES NASRUMMINALLAM	PPP	24583	ATAULLAH KHAN	Indep	635
UMAR ASGHAR KHAN	PAI	12445	AKRAM KHAN	Indep	236
NA-14 MANSEHRA			M. AMIRULLAH KHAN	Indep	199
SYED QASIM SHAH	Indep	33436	<b>NA-20 BANNU</b>		
SYED MUZAMIL SHAH	Indep	26442	ANWAR SAIFULLAH KMAN	IJI	36362
QAZI KHALIL AHMAD	JUI(D)	9783	MOULVI AHMAD JAN	JUI(F)	28023
GEN. MOHAMMAD MUMTAZ KHAN	PPP	8143	HABID-UL-LAH KHAN	indep	3495
SARDAR ABDUR RAHMAN GUJJAR	JU1(F)	537	ABDUL MAJEEED KHAN	ANP	2911
<b>NA-15 MANSEHRA</b>			MAULANA HAMID-UL-LAH	Indep	462
NAWABZADA SALAHUDDIN SAEED KM,	Indep	2094 1	KMAN SAADULLAH KHAN	indep	429
ZARIN GUL	Indep	14084	NASEER MOHAMMAD KHAN	indep	338
MOHAMMAD HANIF KHAN (1)	IJI	10443	MARGHOOB HASSAN	Indcp	259
ZOJA FAKHR-UZ-ZAMAN	PAI	9994	<b>NA-22 SWAT</b>		
GHULAM SUMDANI KHAN	Indep	497	HAJI FAZL-E-RAZIQA	U!	15766
SYED CHIRAGHUDDIN SHAH	JUI(D)	362	NASRULLAH KHAN (2)	ANP	16130
BEMRAM KHAN	indep	238	RAHIM ZADA	Indep	11499
<b>NA-16 MANSEHRA</b>			ABDUR REHMAN (2)	JUI(F)	8773
HAJI MOHAMMAD AYUB KHAN	IJI	8282	MOHAMMAD SOHRAB	Indep	7091
ALAM ZEB KHAN	Indep	8236	ABDULLAH KHAN	indep	5948
HAJI FAQIR MOHAMMAD KHAN	JUI(F)	3336	AMMAD KABIR	Indep	1415
TOOTI KHAN	Indep	640	<b>NA-23 SWAT</b>		
MOHAMMAD QOWAT KHAN	PAI	614	MAHDOOB-UR-RAHMAN	PPP	23443
			MOHAMMAD AFZAL KHAN	ANP	22332
			SHUJAAT ALI KHAN	IJI	20867
			MOULVI ABDUR REHMAN (3)	JUI(F)	7252
			MOHAMMAD AMEEN	Indep	1456
			MOHAMMAD SHER KMAN	Indep	683
			<b>NA-24C MITRAL</b>		
			BEGUM NUSRAT	PPP	32225
			BHUTTO (2) SHAHZADA	IJI	21776
			MOHI-UD-DIN BEGUM	indep	1369
			SHER WALI KHAN NOOR ULLAH	indep	641
			<b>NA-25 DIR</b>		
			FATH-ULLAH	IJI	33064
			NAJAM-UD-DIN	PPP	28013
			M. ZAHID	ANP	9999

<b>NA-26 MALAKAND/DIR</b>			<b>NA-31 TRIBAL AREA</b>		
MOHAMMAD HANIF KHAN	ppp	38925	HAJI SAKHI JAN	Indep	735
MAULANA M. INAYATUR RAHMAN	IJI	22871	MALIK SHEHZAD	Indep	292
ABDUR REHMAN KHAN (4)	ANP	14417	<b>NA-32 TRIBAL AREA</b>		
KHALID JAN	JUI(F)	8951	BISMILLAH KHAN (2)	Indep	1506
AMIR ZAMAN KHAN		1416	MAHBOOB JAN	Indep	1180
M. SOHAIB KHAN	Indep	673	MIAN SHAH JEHAN	Indep	958
<b>NA-27 FATA</b>			MOHAMMAD DAWOOD	Indep	840
QADARGUL	Indep	3222	MOHAMMAD AKBAR (2)	Indep	435
FEROZ	Indep	3221	ABDUR RAUF KHAN	Indep	229
ZARIN	indep	256	KHAISTA GUL	Indep	159
ISMAIL SHER	Indep	60	BASHAK KHAN	Indep	64
ABDULLAH JAN	Indep	47	GUL MOHAMMAD	Indep	45
SAID QAHRAR	Indep	36	ALI KHAN	indep	32
NADIR	indep	22	<b>NA-33 TRIBAL ARE A</b>		
SULTAN MOHAMMAD	indep	19	MALIK WARIS KHAN	Indep	1035
SAID MAHMOOD JAN	Indep	17	MALIK NADIR KHAN	Indep	876
ZAHIR SHAH	Indep	13	HAJI SHAHJ!	Indep	811
<b>NA-28 TRIBAL AREA</b>			HAJI HASSAN SHAH	Indep	27
AKHUNDZADA MOHAMMAD SAEED	Indep	630	AL! AKBAR	Indep	24
HUSSAIN JAN TOORI	ndep	548	MIR ASLAM	indep	22
MALIK OMAR DIN BANGASH	ndep	33	SHAH WALI KHAN	Indep	19
SULTAN HASSAN BANGASH	ndep	10	SHAHID GUL	indep	12
SYED GULAB HUSSAIN TOORI	ndep		S HAJI SAID JAN	indep	7
SYED ASKAR ALI SHAH TOORI	ndep	8	KHIALAI	Indep	5
HAJI GUL AKBAR ALI SHERAZI	ndep	A	QAMAR DIN	indep	5
YOUNAS ALI TOORI	ndep	4	GUL ISLAM	indep	4
MALIK MOHAMMAD ZAMAN BANGAS	ndep	3	MOHAMMAD HASHIM	Indep	4
HAJI ABDUL MANAN BANGASH	ndep	2	HAJI GUL MOHAMMAD	indep	4
MIR AKBAR JAN WATIZAI	ndep		MALIK HINDUSTAN	Indep	3
HAJI SALEH KHAN AL-SHERAZI	ndep	1	JEHAN ZEYOUSUF KHATTAK	Indep	3
HAJI BAZGUL MANGAL	ndep	0	HAJI WAKE EL KHAN	Indep	1
HAJI HAMEED KHAN MASUZAI	ndep	c	HAJI MOHAMMAD GULA3	indep	1
HAJI KHAISTA JAN MANTWAL	ndep	0	<b>NA-34 FATA</b>		
HAJI KHUWAJA MOHAMMAD KHAN	Indep	0	NOORSHER	Indep	501
<b>NA-29 TRIBAL ARE A</b>			MOM IN KHAN	indep	493
GHAZI SAID JAMAL	Indep	2744	ROZA DIN	Indep	128
KHIAL SHAH	Indep	1474	MOHAMMAD KHAN (3)	indep	28
ALIM HASSAN	indep	996	GUL SHARIF	indep	1
FAZAL HAMID	Indep	510	<b>NA-35 ISLAMABAD</b>		
LT. OL(RETD)AMANULLAH KHAN	Indep	89	RAJA MOHAMMAD PERVEZ	ppp	39892
HAJI ABDUS SATTAR	indep		HAJI MOHAMMAD NAWAZ KHOKHAR	Indep	22863
HAJI SHAMS UL-HAQ	Indep	58	DR. SARFRAZ MIR	UI	18337
SYED ABDUL ABBAS	Indep	39	SYED ZAFAR ALI SHAH	PAI	13452
MOHSIN ALI	indep	21	AD:(RETD) KARAMAT REHMAN NIAZI	Indep	4719
SYED QASIM	indep	11	CH. MANZOOR HUSSAIN	Indep	1772
<b>NA-30 TRIBAL ARE A</b>			MOHAMMAD SIDDIQUE BUTT	NPP-K/	1071
NADIR KHAN	indep	485	MUKHTAR HUSSAIN	Indep	905
MAMOOR KHAN	indep	313	AL-SYED ALI AQDAS NAQVI	TNFJ /	849
SARWAR JAN	indep	170	RAJA ABDUR RAHEEM	Indep	807
ASMATULLAH ABDUL	Indep	74	MARGHOOB ALI	Indep	495
KARIM KHAN DOST	indep	15	MIRZA MURTAZA POYA	Indep	312
MOHAMMAD SULTAN	indep	14	ZAHID HUSSAIN ABBASI	Indep	237
MAHMOOD ABDUL	indep	6	MIAN MOHAMMAD ASLAM	Indep	88
LATIF(2)	indep	4	<b>NA-36 RAWALPINDI</b>		
JAN MOHAMMAD	indep	3	SHAHID ABBASI	Indep	49878
SHEERIN AKBAR	indep	2	RAJA ZAFRUL HAQ	IJI	44906
SAIFULLAH	indep	1	RAJA ANWAR	PPP	43829
			HONY: CAPT: MOHAMMAD RIAZ	Indep	190

NA-37 RAWALPINDI			NA-46JHELUM		
RAJA ZAHEER KHAN	IJI	60633	NAWABZADA IQBAL MEHDI	Indep	38921
ABDULAZIZ	Indep	39179	DR. GHULAM HUSSAIN	Indep	37387
BRIG. RTD. M. AKRAM KHAN	PPP	37960	RAJA MUMTAZ AHMAD KHAN	PPP	Missing Data
RAJA AMIR AKBAR	Indep	3	RAJA MUHAMMAD AFSAR KHAN	Indep	Missing Data
NA-38 RAWALPINDI			MIRZA SAEED MEHMOOD BEG JHELUMI	Indep	Missing Data
SHEIKH RASHID AHMED	IJI/	73798	MASOOD UL HASSAN BHATTI	Indef	Missing Data
TIKKA KHAN (GEN.RETD.)	PPP	57733	NA-47 SARGODHA		
MOHAMMAD RAFI BUTT	PAI	2391	EHSAN-UL-HAQ PARACHA	PPP	54748
RAJA ABID HUSSAIN	Indep	1452	MIAN NASEER AHMAD	Indep	51922
MAHMOOD AKBAR KIYANI	NPP-K/	1031	CH. ABDUL SATTAR CHICHI	IJI	1434
MALIK MOHAMMAD DAWOOD	JAHF/	375	AMJAD ALI NOON	Indep	515
HABIB WAHAB-UL-KHAIRI	Indep	361	NA-48 SARGODHA		
NA-39 RAWALPINDI			COLQADIR BUX MELA	PPP	44585
RAJA SHAHID ZAFAR	PPP	60615	NAZIR AHMAD	Indep	31570
RAJA BASHARAT AHMED	IJI	44656	SAGHEER SULTAN ANWAR CHEEMA	IJI	27300
MAULANA S.RIAZ HUSSAIN SHAH	PAI	38922	HASSAN ASHRAF	PNP	1736
MOHAMMAD FAZIL BHATTI	Indep	379	MOHAMMAD KHAN(2)	Indep	1599
MUSHTAQ HUSSAIN MUGHAL	NML(M)	278	MUKHTAR AHMAD (2)	Indep	467
DR. MEHMOOD-UR-REHMAN FAISAL	TUP	277	NA-49 SARGODHA		
NA-40 RAWALPINDI			JAVAID IQBAL CHEEMA	IJI	63906
CH. NISAR ALI	IJI	64607	MUMTAZ AHMAD KAHLOON	PPP	56204
COLHABIB	PPP	55648	RAO JAVED AHMAD	JUI(F)	1350
SAHIBZADA M. AKRAM SHAH	PAI	8299	ATTA-UL-LLAH BAJWA	Indep	687
MOHAMMAD KAMAL	Indep	309	HAJI MOHAMMAD ASLAM	Indep	531
AFTAB AHMAD	Indep	240	MOHAMMAD JAMIL AKHTAR	Indep	317
MOHAMMAD JAFAR KHAN	Indep	150	NA-50 SARGODHA		
NA-41 ATTOCK			ANWAR ALI CHEEMA	IJI	69842
MALIK M. ASLAM	PPP	47594	FARRUKH JAVED	PPP	46458
TAJ M. KHAN ZADA	IJI	35884	SYED NUSRAT ALI SHAH	Indep	8344
SHEIKH AFTAB AHMED	PAI	28285	RAI MOHAMMAD PANAH	NPP(K)	3840
MOHAMMAD BAHADUR KHAN	Indep	8532	KHALID AMIR KHAN	Indep	845
SYED ASHIQ KALEEM	Indep	2437	HAJI MOHAMMAD YOUNAS	JUI(F)	293
MAQBOOL ELLAHI SIDDIQUI	Indep	681	NA-51 SARGODHA		
<b>NA-42 ATTOCK</b>			MALIK MOHAMMAD NAEEM KHAN	IJI	70721
AMIR M. KHAN	PPP	66623	MIAN SULTAN AWAN	PPP	43727
MALIK ALLAH YAR KHAN	PAI	51438	BRIG.MALIK MOHAMMAD AKBAR KHAN	Indep	2532
MALIK LAL KHAN	IJI	39225	MALIK MOHAMMAD SHAHADAT	Indep	797
NA-43 CHAKWAL			HAJI MOHAMMAD ABDULLAH	Indep	325
LT.GEN.(RETD) MALIK ABDUL MAJEED	IJI	Missing Data	MIAN AZIZ-UL-HAQ QURESHI	Indep	201
SARDAR MUHAMMAD ASHRAF KHAN	PPP	Missing Data	<b>NA-52 KIISOIAB</b>		
RAJA MUNAWAR AHMAD	PAI	Missing Data	MALIK KHUDA BUX KHAN	Indep	56644
MUHAMMAD NAWAZ MALIK	Indep	Missing Data	NASEEM AHMAD AAHEER	IJI	37172
MAJ.GEN.(RETD) TAJAMMUL HUSSAIN	TIIP	Missing Data	MALIK MOHAMMAD AZAM KHAN	PPP	19452
NA-44 CHAKWAL			DR. RAFAQAT SULTAN WATTO	PAI	4919
SARDAR MANZOOR HAYAT TAMMAN	IJI	73321	MIAN AZIZ-UL-HAQ QURESHI (2)	Indep	811
AIR MARSHAL RTD.M. NOOR KHAN	PPP	60810	<b>NA-53 MIANWALI</b>		
<b>NA-45 JHELUM</b>			ABDUL SATTAR KHAN NIAZI	PAI	44537
RAJA M. AFZAL	IJI	48806	NAWABZADA MALIK MUZAFFAR KHAN	Indep	24842
DR. GHULAM HUSSAIN	Indep	36534	MOHAMMAD MAQBOOL AHMAD KHAN	Indep	9923
CH. MOHAMMAD ALTAF HUSAIN	PPP	28090	DR. M. ANWAR KHAN	PPP	7650

QARI MOHAMMAD YOUSAF SIALVI	Indep	3896	ABDUR REHMAN KHAN	Indep	1929
ABDUL WAKEEL BUTT	Indep	779	HAQ DAD KHAN NIAZI	Indep	1121
MIRZA MOHD NAWAZISH ALI BAIG	Indep	510	KHAN ASGHAR AZIZ KHAN	Indep	246
			KHAN GUL HAMID KHAN	Indep	186

<b>NA-54 MIANWALI</b>			<b>NA-64 FAISALABAD</b>		
DR. SHER AFGAN KHAN	PAI	41709	AHMAD SAEED AWAN	PPP	54499
AMIR HAYAT KHAN	IJI	39966	RAJA NADIR PERVEZ	Indep	6688
FAQIR ABDUL MAJEED KHAN	PPP	18319	QARI ABDUL HAFEEZ	JAHF	1513
MOHAMMAD TUFAIL RAZA	Indep	3785	NASEEM ARTIST	PAI	941
SYED SHAFIQUE HAIDER ZAIDI	Indep	1384	MOHAMMAD NASIR DIN	JUI(D)	647
HAQ DAD KHAN NIAZI (2)	Indep	1122	SHEIKH MATLOOB HUSSAIN	TNFJ	394
SAFDAR RASOOL	Indep	872	HAJI ABDUL MAJID IBRANI	Indep	369
<b>NA-55 BIIAKKAR</b>			<b>NA-65 FAISALABAD</b>		
MOHAMMAD ZAFARULLAH KHAN	Indep	48979	ABDUL JABBAR	Indep	348
BASHEER AHMED KHAN	PAI	38332	QARI MOHAMMAD SAEED CHISHTI	Indep	159
GHAZANFAR ALI	PPP	25762	MEHR ABDUR RASHID	PPP	69451
<b>NA-56 BIIAKKAR</b>			<b>CH. SHER ALI</b>		
RASHID AKBAR KHAN	Indep	48905	HAJI M. RAFIQ KHAN	PAI	2425
AMAN-UL-LAH KHAN SHAHANI	Indep	35948	MRS. NIGHAT WAHEED	Indep	1827
NAZIR AHMED UTTRA	PPP	20326	MOHAMMAD ANWAR ALI BALOCH	Indep	342
<b>NA-57 FAISALABAD</b>			<b>ABU-AL-HASSAN GILANI</b>		
CH. MOHAMMAD NAZIR AHMAD	Indep	56639	<b>NA-66 JIIANG</b>		
RANA MOHAMMAD ASLAM KHAN	PPP	54460	AMIR HUSSAIN SHAH	PPP	35665
DR. SHAFIQ CH.	Azad group	6111	SARDARZADA M. ALI SHAH	IJI	32999
MALIK MUKHTAR AHMED AWAN	PAI	1833	MEHR DOST MOHAMMAD	Indep	28139
MST. NAEEM AKHTAR CHAUDHRY	Indep	807	SYED QAISER ALI RAZA	Indep	1974
RANA ABDUL HAMEED KHAN	Indep	709	<b>NA-67 JIIANG</b>		
<b>NA-58 FAISALABAD</b>			<b>SYEDA ABIDA HUSSAIN</b>		
RAI M. ASLAM KHAN	PPP	54863	MAULANA RAHMAT-ULLAH	IJI	41843
RAI SALA-UDDIN KHAN	IJI	41542	RAI GHULAM SABIR KHAN	PPP	2300
BABOO KHAN	PAI	3956	<b>NA-68 JHANG</b>		
<b>NA-59 FAISALABAD</b>			<b>SYEDA ABIDA HUSSAIN (2)</b>		
SHAHAD KHAN BALOCH	PPP	50122	MAULANA HAQ NAWAZ	JUI(F)	38256
MIAN NASIR AU BALOCH	IJI	37504	MIAN RIAZ HASHMAT JANJOA	Indep	19770
PIR MOHAMMAD ABDUR REHMAN	Indep	6121	ZULFIQAR BUKHARI	PPP	11485
<b>NA-60 FAISALABAD</b>			<b>SYED SADIQ HUSSAIN SHAH</b>		
CH. ABDUL SABOOR KHAN	PPP	27978	SYED ASAD HAYAT	Indep	519
M. ABDULLA GHAZI	IJI	24099	<b>NA-69 JIIANG</b>		
MALIK MOHAMMAD ALI SHAD	Indep	17327	FAISAL SALEH HAYAT	PPP	54240
MOHAMMAD SAJID MAJID	PAI	15993	SYED IFTIKHAR ALI SHAH	IJI	33792
GHULAM NABI CHAUDHRY	NPP-W	9851	MOHAMMAD YOUNAS (2)	Indep	13020
RAO MOHAMMAD ASHRAF KHAN	Indep	5470	SYED IFTIKHAR HUSSAIN	TNFJ	5323
MUNAWAR HUSSAIN	Indep	3618	DR. MOHAMMAD ASLAM	Indep	482
MOHAMMAD SHARIF CHAUDHRY	Indep	665	<b>NA-70 JHANG</b>		
RAO SAFDAR ALI KHAN	Indep	177	SAHIBZADA NAZIR SULTAN	PPP	61817
<b>NA-61 FAISALABAD</b>			<b>M. ARIF KHAN SYAL</b>		
CH. M. NAZIR AHMAD	IJI	71662	SAFDAR ALI KHAN	Indep	576
CH. TALIB HUSSAIN	PPP	54769	<b>NA-71 T.T. SINGII</b>		
SARDAR DILDAR AHMAD CHEEMA	Indep	2249	CH. ASADU-UR-REHMAN	IJI	65430
MIAN MOHAMMAD ABDULLAH	Indep	1380	MOHAMMAD BASHIR KHAN	PAI	2037
<b>NA-63 FAISALABAD</b>			<b>AZRA KHAN</b>		
CAPTAN NISAR AKBAR	PPP	54208	CH. MOHAMMAD YOUSAF JAVED	Indep	1382
HAJI M. AKRAM ANSARI	IJI	45640	RAI OBAID-UL-LAH KHAN,	Indep	1282
MAULANA MOHD. SAEED ASAD	PAI	9761	MOHAMMAD RI AZ	Indep	474
CH. SARDAR MOHAMMAD SALIK	Indep	470	MAJOR (RETD) AHMAD NAWAZ	Indep	299
MALIK MOHAMMAD ASLAM	JASP /	350			

RANA MOHAMMAD ASGHAR	TNFJ /	310	SARDAR KHURSHID ANWAR	Indep	138
BASHIR AHMAD ANSARI	Indep	253			

<b>NA-72 T.T. SINGII</b>			<b>NA-81 GUJRAT</b>		
CH. ABDUL SATTAR	IJI	66463	CH. SHUJAAT HUSSAIN	IJI	77902
GHIASUDDIN JANBAZ	PPP	51425	MUSHTAQ HUSSAIN PAGGANWALA	PPP	69362
SYED MURAD ALI SHAH	TNFJ	871	MOHAMMAD SAEED(2)	Indep	1766
WALI MOHAMMAD	Indep	769	MISS IRSHAD CHAUDHRY	Indep	515
HAJI NOOR AHMAD	Indep	346	MOHAMMAD WALAYAT BUTT	Indep	487
SAEED JILANI TARIQ	Indep	284	AJMAL ALI KHAWAR	Indep	266
PIRZADA.MANSOOR JAVED	Indep	87	<b>NA-82 GUJ RAT</b>		
<b>NA-73 T.T. SINGII</b>			MOHAMMADASGHAR	PPP	76293
HAJI MOHAMMAD ISHAQ	PPP	55499	S. MANZOOR HUSSAIN TAJ	IJI	63609
MOHAMMAD HAMZA	IJI	51868	RAJA M. AFZAL KHAN	PAI	14168
MOHAMMAD SADIQ	Indep	10661	CH. MOHAMMAD FAYYAZ	Indep	562
<b>NA-74 GUJRANWALA</b>			CH. MOHAMMAD YAQOOB	Indep	448
COL.GHULAM SARWAR CHEEMA	PPP	72140	BRIG (RETD) SAHIB DAD	Indep	357
HAMID NASIR CHATTA	IJI	65931	CH. MOHAMMAD FAROOQ (2)	Indep	193
MOHAMMAD AKRAM JWINDAH	Indep	828	<b>NA-83 GUJRAT</b>		
<b>NA-75 GUJ RAN WALA</b>			CH. MUMTAZ TARRAR EX-MNA	PPP	50364
MALIK FAZAL HUSSAIN KHAN	PPP	63237	CH. MUHAMMAD IQBAL	IJI	40126
IRSHADULLAH TARAR	IJI	52638	CH. GHULAM RASOOL	Indep	21077
RAI M. SHAFI KHARL	PAI	2920	S.M.MAHFOOZ MASHADI	PAI	11432
BRIG (RETD) IFTIKHAR-I-BASHIR	Indep	766	GULZAR MAHMOOD	Indep	905
<b>NA-76 G UJ RAN WALA</b>			JAVED AKBAR	Indep	628
HAJI AMANULLAH	PPP	63622	<b>NA-84 GUJRAT</b>		
KHAN GHULAM DASTEGER	IJI	60036	UMAR HAYAT LALIKA	IJI	34067
M. SIDDIQ NADEEM	PAI	2418	NAZAR MOHAMMAD GONDAL	PPP	30832
SHEIKH BASHIR AHMAD	PML(F)	1609	MOHAMMAD NAWAZ BOSAL	Indep	16969
GHULAM C,ADIR KHAN	Indep	411	FAIZ AHMAD	PAI	3505
MOHAMMAD MANSOOR	Indep	229	CH. MOHAMMAD IQBAL BOSAL	Indep	1191
MOHAMMAD EHSAN-UL-LAH	Indep	147	CH. MOHAMMAD ASLAM (2)	Indep	698
MAZHAR-UL-HAQ KHAN	Indep	41	<b>NA-85 SIALKOT</b>		
<b>NA-77 GUJRANWALA</b>			MIAN M. SHAFFI	IJI	59857
ASLAM LONE	PPP	63273	AKHTAR JAVED PIR ZADA	PPP	40836
CH. ANWAR BHINDAR	IJI	52388	M. SAJJAD DARPIRZADA	PAI	4552
MOHAMMAD MALIK	Indep	1570	QAZI ZAKA ULLAH	Indep	792
MOHAMMAD MANSOOR (2)	PAI	= 1247	CH. MOHAMMAD SARWAR JAN	Indep	599
KH. MOHAMMAD BABAR LOAN	Indep	324	<b>NA-86 SIALKOT</b>		
KH. MOHAMMAD IKRAM LOAN	Indep	148	CH. AMEER HUSSAIN	IJI	58515
<b>NA-78 GUJRANWALA</b>			FAIZ AHMED	PPP	55118
RANA NAZIR AHMAD KHAN	IJI	54979	MIAN MASOOD AHMAD	Indep	6896
MEHDI HASAN	PPP	30394	CH. JAVED MEHDI	Indep	2980
MOHAMMAD IRSHAD	NPP(K)	21627	ASMATULLAH MIR	Indep	593
S.M.KHALIL-UR-RAHMAN	PAI	2400	<b>NA-87 SIALKOT</b>		
MOHAMMAD GULZAR KHAN	ANP	1758	KHURSHID ALAM	PPP	52635
<b>NA-79 GUJRANWALA</b>			CH. NAZIR AHMED	IJI	51461
CH. AJAZ AHMAD	IJI	40866	CH. ZULFIQAR AHMED	PAI	14091
MIAN SHAHADAT KHAN	PPP	33886	MOHAMMAD AKRAM KHAN2	Indep	8184
MOHAMMAD ASHRAF (3)	Indep	31957	<b>NA-88 SIALKOT</b>		
SALEEM AHMAD KHAN	Indep	12510	MIAN NAWAZ SHARIF	IJI	44855
<b>NA-80 GUJRAT</b>			SAHIBZADA MOHAMMAD AHMED	PAI	19805
CH. TAJAMAL HUSSAIN	IJI	74813	MOHAMMAD SIKANDAR KHAN	Indep	1966

NAWABZADA MAZHAR ALI	PPP	71364	CH. ASAD-UL-LAH KHAN BAJWA	PDP	1741
S.ASHIQ HUSSAIN SHAH	PAI	5001	<b>NA-89 SIALKOT</b>		
			HAJI HAMD NAWAZ KHAN	PPP	32199

CH. MOHAMMAD SARWAR KHAN	IJI	31996	DR. ASGHAR HUSSAIN	Indep	182
SHEIKH ALLAH DITTA SETHI	Indep	13414	MALIK MOHAMMAD AKHTAR	Indep	176
SYED SAEED-UL-HASSAN	Indep	7669	MALIK MOHAMMAD AKBAR SAQI	Indep	61
MOHAMMAD ASLAM KHAN (3)	Indep	7201	<b>NA-97 LAHORE</b>		
SYED KALEEM ABBAS	Indep	6131	KH.AHMAD TARIQ RAHIM	PPP	56849
MOHAMMAD AJMAL QURESHI	Indep	1142	UAQAT BALUCH	IJI	55461
MOHAMMAD AKRAM (4)	Indep	844	ENGR-M. SALEEMULLAH KHAN	PAI	4661
MOHAMMAD NASEER KHAN (2)	Indep	450	SYED MUNIR HUSSAIN GILLANI	TNFJ	914
<b>NA-90 SIALKOT</b>			SYED AHMAD SAEED KIRMANI	Indep	322
ANWAR-UL-HAQ	IJI	43724	<b>NA-98 LAHORE</b>		
GHULAM SARWAR KHAN	PPP	25026	MIAN USMAN	IJI	51559
MOHAMMAD HANIF	NPP(K)	2214	SH. MOHAMMAD RASHID	PPP	47737
AZAM KHAN	Indep	1169	MIAN MOHAMMAD ASIF	Indep	5685
MOHAMMAD SADIQ BHATTI	Indep	514	MIAN KHURSHEED KASURI	PAI	2575
MOHAMMAD AKBAR (2)	Indep	16	AMAR SHAHZAD	Indep	407
<b>NA-91 SIALKOT</b>			<b>NA-99 LAHORE</b>		
ANWAR AZIZ CH.	IJI	31537	HAJI MOHAMMAD ASGHAR	PPP	32538
ADDRIS TAJ CH.	PPP	27612	WAZIR ALI BHATTI	IJI	24176
HAMAD ALI	Indep	12013	MAULANA ABDUL GHAFUOR ALWARI	PAI	10787
YAQOOB ALI	Indep	3623	MALIK KHADIM HUSSAIN	Indep	2877
<b>NA-92 LAHORE</b>			NAZIR AHMAD (2)	Indep	1976
RTD. MAJ.GEN.M.H.ANSARI	PAI	46071	SARDAR KHALID UMAR	Indep	277
RAFIQ AHMAD SHEIKH	PPP	44719	<b>NA-100 LAHORE</b>		
KHAN ZAFARULLAH KHAN	Indep	2960	MERAJ KHALID	PPP	33897
PIR ASHRAF	IJI	1708	SAFDAR ALI DIYAL	IJI	30452
SETH ABDUL WAHAB	JUI(F)	1022	M. ASHRAF BUTT	PAI	11352
MALIK GHULAM YAZDANI	Indep	632	ASHIQ ALI	Indep	2191
ZAFARULLAH KHAN ADVOCATE	WP	181	CH. AZEEM-UD-DIN	Indep	793
JEHANGIR ASHRAF VAINCE	PDP	127	ABDUL QAYYUM PAHAT	Indep	264
SYED FASIH AHMED JAFFARY	Indep	86	MOHAMMAD AHMAD	Indep	125
<b>NA-93 LAHORE</b>			<b>NA-101 SIEIKIUPURA</b>		
AITZAZ AHSAN	PPP	72053	NISAR AHMAD S/O M MALIK	PPP	67481
SHEIKH ROHAILASGHAR	IJI	41221	RANA TANVEER HUSSAIN	IJI	42525
RTD.LT.GEN.KM.AZHAR	PAI	8016	SH. MOHAMMAD JAMEEL	Indep	1050
AGHA ALY BASHIR	Indep	1138	MALIK AKBAR ALI DOGAR	PAI	1001
NASAR-UD-DIN MIRZA	Indep	405	HAJI MOHAMMAD ASHRAF	Indep	453
QAZI ABDUL HAKEEM	Indep	159	MOHAMMAD AKBAR (3)	Indep	384
<b>NA-94 LAHORE</b>			CH. MOHAMMAD ANWAR	Indep	229
BENAZIR BHUTTO(2)	PPP	53307	NASIR AHMAD S/O CH. LAL KHAN	Indep	215
MIAN UMER HAYAT	Indep	44091	<b>NA-102 SIEIKIUPURA</b>		
PIR EJAZ AHMED HASHMI	PAI	4735	MALIK MUSHTAQ AHMAD	PPP	44131
IQBALAHMEDKHAN	IJI	746	CH. NAZIR WIRCK	IJI	33517
MIAN AZHAR HUSSAIN	Indep	416	MUNAWAR HUSSAIN MANJ (2)	Indep	27982
DR. QARI ASHFAQULLAH	Indep	140	SHEIKH M. ISLAM	PAI	8590
DR. SAEED GILL	PDP	103	MOHAMMAD KHAN MANJ	Indep	2632
<b>NA-95 LAHORE</b>			FARMAN ALI BHATTI	Indep	1055
MIAN NAWAZ SHARIF (2)	IJI	50093	<b>NA-103 SIEIKHUPURA</b>		
ARIF IQBAL HUSSAIN BHATTI	PPP	36657	MARIF AWAN	PPP	38359
MALIK SAEED HASSAN	Indep	929	MOHAMMAD BERJEES TAHIR	Indep	31626
FARID AHMAD PIRACHA	JAHP	712	ABDUL LATIF ANWAR	JUI-D /IJI	13731
MALIK GHULAM MUSTAFA KHAR	NPP(K)	623	MIAN SHAMIM HAIDER	Indep	13464
<b>NA-96 LAHORE</b>			IQBAL HAIDER (2)	Indep	299
JEHANGIR BADAR	PPP	43344	<b>NA-104 SIEIKIUPURA</b>		
HAFIZ SULEMAN BUTT	IJI	38688	CH. TAWAKAL ULLAH VIRK	PPP	60984



AZHAR SAEED BUTT	PAI	2619		
MOHAMMAD AJMAL QADRI	JUI(D)	198		

HAJI NAEEM HUSAIN	IJI	50202	<b>NA-115 MULTAN</b>		
			RIAZ QURESHI	PPP	42021
			SAHIBZADA S.HAMID SAEED KAZMI	PAI	35004
<b>NA-105 SHEIKIUPURA</b>			BABU FEROZ-UDDIN ANSARI	IJI	24420
RAI RASHEED AHMAD KHAN	PPP	41094	GHULAM QASIM KHAN	Indep	526
RAI MANSAB ALI KHAN	IJI	28826	DR. MOHAMMAD MOHSIN	TNFJ	216
RAI ASGHAR ALI KHAN	PAI	9319	WILAYAT HUSSAIN GARDEZI	PNP /	85
SHAFQATULLAH KHAN	Indep	1659	<b>NA-116 MULTAN</b>		
SARDAR MOHAMMAD ANWAR AHMAD KH	Indep	679	MALIK MUKHTAR AWAN	PPP	45475
<b>NA-106 KASUUR</b>			SHEIKH RASHEED	IJI	40778
SAHIBZADA KHIZER HAYAT KHAN	Indep	59681	MOHAYY DIN AHMAD MIAN	PAI	1428
SARDAR ASIF ALI	PPP	35513	HAJI MOHAMMAD ALI	JUI-F/	980
MIAN KHALIL AHMAD SAHIB	Indep	1998	SARDAR GHULAM HUSSAIN KHAN	TNFJ/	117
MALIK M. ASHIQ	IJI	1110	<b>NA-117 MULTAN</b>		
RTD.MAJ.GEL.M.H.ANSARI	PAI	407	M. SIDDIQUE KANJO	IJI	50700
<b>NA-107 KASUR</b>			RANA MUMTAZ AHMED NOON	PPP	50423
RAO KHIZAR HAYAT	IJI	40546	MOHAMMAD ZAHOOOR ALAM	PAI	4500
BASIT JEHangIR SHAIKH	PPP	20777	<b>NA-118 MULTAN</b>		
CH. HAKIM ALI	Indep	18819	MIRZA NAZIR BAIG	PPP	31368
ABDUL QAYOM PAHAT	PAI	4766	SYED NASAR-UD-DIN SHAH	PAI	27780
SYEDA NILAUFER MEHDI	Indep	179	KHURSHID KANJO	IJI	23747
<b>NA-108 KASUR</b>			MOHAMMAD IRSHAD ABBAS GHALLO	Indep	8344
SARDAR TALAB HUSSAIN	IJI	54084	<b>NA-119 MULTAN</b>		
MALIK ASHIQ HUSSAIN	PPP	38375	RANA TAJ AHMAD NOON	PPP	57123
QARI MOHAMMAD IBRAHIM	JUI-F /	3537	RANA SHAUKAT HAYAT NOON	IJI	46126
<b>NA-109 KASUR</b>			CH. ABDUL RAZAQ	PAI	1946
SARDAR MOHAMMAD ASHIQ DOGAR	PPP	54423	INTIZAR MOHAMMAD KHAN	Indep	920
MAULANA MOEEN-UDDIN	JAH-L/IJI	49481	RANA MOHAMMAD ISLAM-UD-DIN	Indep	492
<b>NA-110 OKARA</b>			MOHAMMAD IQBAL NOON	Indep	238
RAO SIKANDAR IQBAL	PPP	56021	<b>NA-120 MULTAN</b>		
MIAN M. ZAMAN	IJI	45727	CH. ABDUR RAHMAN WAHLA	PPP	50921
MAJOR (RTD) KHALIL AKHTAR	Indep	432-	JAVED HASHMI	IJI	48004
CH. MEHR MOHAMMAD	Indep	268	ALTAF HUSSAIN (2)	Indep	880
<b>NA-111 OKARA</b>			RAO SADAQAT ALI KHAN	Indep	728
SYED SAJJAD HAIDER	IJI	45438	AKHTAR HUSSAIN GIL	PMKP	281
MOHAMMAD SAEED	PPP	40973	<b>NA-121 KHANEWAL</b>		
CH. MEHMOOD AHMAD	NPP(K)	5268	IQBAL HERAJ	PPP	52368
HAJI MOHAMMAD SADIQ	Indep	2017	SYED FAKHR IMAM	IJI	48823
<b>NA-112 OKARA</b>			ABDUL KAREEM NOMANI	Indep	Missg Data
RAO MOHAMMAD AFZAL KHAN	PPP	49291	<b>NA 122 KHANEWAL</b>		
MIAN NAWAZ SHARIF (3)	IJI	47072	AFTAB AHMAD DANA	IJI	50291
SH. MOHAMMAD NAWAZ	Indep	1477	MAJOR RIFFAT HAYAT KHAN	PPP	29024
RAO MOHAMMAD ASLAM	Indep	1046	MIAN MASSAB HAIDER SHAH	Indep	15377
<b>NA-113 OKARA</b>			AKHTAR HUSSAIN GILL	PAI	3962
MIAN MANZOOR AHMAD KHAN	IJI	49033	CH. FARZAND ALI	Indep	1252
MIAN ATTA MOHAMMAD KHAN	PPP	45122	<b>NA-123 KHANEWAL</b>		
<b>NA-114 MULTAN</b>			GHULAM HAIDER WAIN	IJI	57256
SYED YOUSUF RAZA GILANI	PPP	58279	MOHAMMAD ASLAM BODLA	PPP	55322
MIAN NAWAZ SHARIF (4)	IJI	41950	MAULANA ABDUR RAHIM SHAKIR	PAI	3125
MALIK HAJI QADIR BAKHSH	Indep	20148	SYED TAQEER SHAH	Indep	1952
SYED GHULAM YAZDANI GILANI	Indep	366	RANA BASHIR AHMAD KHAN	NPP-K /	616

			MOHAMMAD AMIR BODLA	Indep	302
--	--	--	---------------------	-------	-----

<b>NA-124 SAHIWAL</b>			<b>NA-135 MUZAFFARGARH</b>		
CH. NAWAZ SHAKOOR	PPP	61535	ZULFIQAR ALI PARQ	Indep	25850
ANWAR-UL-HAQ RAJA	IJI	47673	SYED JAMIL HUSSAIN BUKHARI	PPP	25474
MOHAMMAD RAFIQUE SAFDAR	Indep	646 5	M. ASLAM KHAN	IJI	12386
CH. MUHAMMAD IDREES	PAI	190 3	MOHAMMAD WOMAN	JUI-F /	10368
<b>NA-125 SAHIWAL</b>			SYED AFZAAL MUSTAFA	Indep	8375
CH. MOHAMMAD ASHRAF	IJI	56074	GHULAM SHABBIR KHAN	Indep	5827
GH. FARID KHATIA	PPP	48265	NAZAR ABBAS KHAN (2)	Indep	3938
MOHAMMAD JAMIL	Indep	736 0	SYED GHULAM ABBAS SHAH	Indep	1545
<b>NA-126 SAHIWAL</b>			<b>NA-136 MUZAFFARGARH</b>		
MIAN AHMAD NAWAZ	IJI	58345	NAWABZADA NASRULLAH KHAN	PDP	49037
MALIK IQBAL LANG	PPP	53819	MIAN ATTA MOHAMMAD QURESHI	IJI	30057
BEGUM SHAHNAZ JAWED	PAI	159 65	IMTIAZ ALEEM QURESHI	PAI	13464
MALIK MOHAMMAD IQBAL	Indep	903	MEHR TANVEER AHMAD	Indep	740
<b>NA-127 SAHIWAL</b>			<b>NA-137 MUZAFFARGARH</b>		
MIAN GHULAM MOHAMMAD MANIKA	IJI	53967	GHULAM MOHAMMAD MUSTAFA KHAR	NPP(K )	48511 8
RAO HASHIM KHAN	PPP	49596	'SARDAR MANZOOR AHMAD KHAN	PPP	9776
CH.M.BASHIR AHMED ADVOCATE	PAI	571 8	MIAN MUZAFFAR MEHDI HASHMI	PAI	2129
MOHAMMAD SHAH KHAJJA	Indep	280 9	MALIK GHULAM MOHD MURTAZA KHAR	Indep	1458
<b>NA-128 SAHIWAL</b>			ABDUR REHMAN (5)	Indep	940
RAJA SHAHID SAEED	IJI	59731	ARSHAD MAHMOOD KHAN	Indep	485
RANA NAEEM MAHMOOD	PPP	48387	GHULAM MOHAMMAD NOOR RABBANI K	Indep	293
<b>NA-129 VEHARI</b>			DR. SYED ATHAR MEHDI KAZMI	Indep	237
M. MUMTAZ KHAN BHABBA	PPP	65240	MOHAMMAD ASGHAR	Indep	103
M.NAWAZ KHAN ALIAS DILAWAR KHAN	IJI	62056	INAM KARIM	PDP	65
MEHR MOHAMMAD GHULAM ALI	Indep	1098	<b>NA-138 MUZAFFARGARH</b>		
HAJI MANSOOR HUSSAIN	Indep	679	GHULAM MOHAMMAD MUSTAFA KHAR(2)	Indep	60649
JAVED MASOOD TAHIR	PNDA /	439	MEHRAHMAD GORMANI	PPP	14882
<b>NA-130 VEHARI</b>			MIAN GHULAM ABBAS	Indep	3196
AKBAR ALI BHATTI	IJI	64883	MIAN TARIQ AHMED	IJI	829
AHSAN KHAN KHAKWANI	PPP	51494	ABDUR REHMAN (6)	Indep	446
MOHAMMAD ISHAQ TARAR	Indep	586 0	GHULAM MOHAMMAD MURTAZA MAR	Indep	408
<b>NA-131 VEHARI</b>			<b>NA-139 LAYYAH</b>		
SYED SHAHID NASIM	IJI	68297	NIAZ AHMAD JHAKKAR	PPP	42767
M. S. BAQIR	PPP	57560	S.M.KHURSHEED AHMED BUKHARI	PAI	34884
<b>NA-132 D.G. KHAN</b>			GHULAM FARID MIRANI	IJI	13205
KHAWAJA KAMAL-UDDIN	IJI	59252	SYED FAIZ ELLAHI SHAH	Indep	4183
MANZOOR AHMED LUND.	PPP	45364	ZULFIQAR KHAN NIAZI	Indep	1328
KHAWAJA ATTA-ULLAH KHAN	PAI	135 02	DR. MAZHAR ALI KHAN MALIK	Indep	183
MALIK GHULAM RASOOL	TNFJ /	535	<b>NA-140 LAYYAH</b>		
MAULANA FAZAL-UR-REHMAN	JUI-F /	244	SYED IFTIKHAR HUSSAIN NAQVI	TNFJ	62981
<b>NA-133 D.G. KHAN</b>			SAHIBZADA FAIZ-UL-HASSAN	IJI	31452
SARDAR FAROOQ A.K. KAGHARI	PPP	75694	SARDAR BEHRAM KHAN	PPP	28281
BEGUM AFIFA MAMDOT	IJI	35881	CH. NOOK AHMAD	Indep	23173



KHALID ABDULLAH JANGWANI	PAI	237 5	<b>NA-141 BAHAWALPUR</b>		
NAWABZADA SARDAR ATA MOHD KHAN	Indep	989	PRINCE SALAH-UD-DIN	Indep	70096
<b>NA-134 RMANPUR</b>			SAEED-UR-RASHEED ABBASI	PPP	47504
ASHIQ MOHAMMAD KHAN MAZARI	PPP	52770	KHAWAJA MAHMOOD-UL-HASSAN	Indep	2767
NASRULLAH KHAN DARISHAK	IJI	52145	<b>NA-142 BAHAWALPUR</b>		
SARDAR SHER BAZ KHAN MAZARI	NDP /	10503	FAROOQ AZAM	PPP	53328
			MOHAMMAD IQBAL ATHAR	IJI	32615
			TAHIRA KHAN	PAI	11724
			CH. ABDUL MAJID	Indep	10804

MOHAMMAD NASIR	NPP(K)	2884	<b>NA-150 RAHIM YAR KHAN</b>		
			RAIS SHABBIR AHMAD	IJI	46518
<b>NA-142 BAHAWALPUR</b>			SARDAR ASLAM DHAR	PPP	46015
MOULA AHMAD HASSAN	JUI(F)	1766	RAFIO AHMAD LAGHARI	Indep	30684
SARDAR MOHAMMAD ASLAM KHAN	Indep	1226	SYED SALEH MOHAMMAD SHAH	Indep	606
SYED SALMAN GARDEZI	Indep	563	CH. BASHIR AHMAD (2)	Indep	493
MUMTAZ AHMAD JAJJA	Indep	476	SYED ALI AKBAR MAHMOOD	Indep	355
MALIK TAHIR MAHMOOD	Indep	343	SYED AHMAD MAHMOOD	Indep	306
<b>NA-143 BAHAWALPUR</b>			<b>NA-151 SUKKUR</b>		
SYED TASNIM NAWAZ GARDEZI	IJI	50338	ALI HASSAN MANGHI	PPP	57390
MIAN RIAZ HUSSAIN	Indep	40196	ISLAM-UD-DIN SHEIKH	IJI	29065
MAOSOOD GILL	PPP	38816	ABDUL QAYYOOM SHEIKH	Indep	8666
SYED KHADIM HUSSAN BUKHARI	Indep	4415	ABDUL SATTAR	Indep	1440
			\$ADIQ KHAN	Indep	568
			BAHARUDDIN SHAIKH	Indep	400
<b>NA-144 BAHAWALNAGAR</b>			TARIO AZIZ	Indep	309
MUMTAZ GILLANI	PPP	37942	NOORUDDIN SHEIKH	Indep	290
SYED MOHAMMAD ASGHAR SHAH	IJI	36922	MIAN MUMTAZ RABBANI	Indep	189
DR. NOOR MOHAMMAD GHAFFARI	Indep	29417	MUFTI MOHAMMAD HUSSAIN	Indep	149
MIAN M. AFZAL WATTO	PAI	6999	M D YAOOOB	Indep	143
COL. (RETD) QAMMAR-UZ-ZAMAN	Indep	641	TAJ MOHAMMAD	Indep	59
MIAN FAZAL FARID LALIKA	Indep	369	SHAIKH AMANULLAH ADVOCATE	Indep	52
			ATTAULLAH KHAN	Indep	45
			SIKANDAR ALI MANGHI	Indep	32
<b>NA-145 BAHAWALNAGAR</b>			HAJI JAN MOHAMMAD	Indep	23
MIAN ABDUS SATTAR KHAN	IJI	62764			
SAHIBZADA NOOR HASSAN	Indep	3120	<b>NA-152 SUKKUR</b>		
HAFIZ MIAN MOHD.SALEEM MOHARVI	PAI	2679	MIAN ABDUL HAQ	PPP	53003
MIAN MOHAMMAD KHALID LALIKA	JAHP/	2583	SARDAR GHULAM MOHD KHAN MEHR	IJI	25099
SULTAN AHMAD	Indep	2151	MAULVI ABDUS SAMAD	JUI(F)	4971
MIAN MOHAMMAD TAYYAB WATTO	Indep	550	TAJ MOHAMMAD (2)	Indep	600
MALIK MOHAMMAD OASIM	PML(Q)	64	SHAH MOHAMMAD SHEIKH	Indep	275
			NASEER AHMED	Indep	238
<b>NA-146 BAHAWALNAGAR</b>			NISAR AHMAD KHAN LUND	Indep	125
ABDUL GHAFUOR CHOUDHRY	IJI	58370			
MOHAMMAD AFZAL SINDHU	PPP	57760	<b>NA-153 SUKKUR</b>		
DR. MIAN EHSAN BARI	Indep	9814	NOOR MOHAMMAD LUND	PPP	52786
MOHAMMAD RAFIQ GILL	PAI	2373	ABDUL WAHAB	JUI(F)	777
ABDUL MAJID MIAN	Indep	1714	NISAR AHMAD	Indep	596
MAHMOOD ALI	Indep	816			
<b>NA-147 RAHIA'IYAR KHAN</b>			<b>NA-154 SHIKARPUR</b>		
SYED AHMAD ALAM ANWAR	IJI	52063	AGHA TARIQ	PPP	40829
MAULANA SIRAJ DINPURI	PPP	35752	ELLAHI BUX SOOMRO	IJI	17105
HAJI MOHAMMAD SAJF-UL-LAH KHAN	Indep	13764	MAULVI GHULAM OADIR	JUI(F)	6611
SYED IFTIKHAR HASSAN GILANI	Indep	1531	RAHIM BUX SOOMRO	Indep	767

KH. JAMAL MOHAMMAD GOREJA	Indep	1220			
RATS GHULAM MOHAMMAD	Indep	772	<b>NA-155 SHIKARPUR</b>		
SYED NAZAR HUSSAIN SHAMSI	TNFJ /	702	AGHA ATTA MOHAMMAD	PPP	41323
HAJI MOHAMMAD SHARIF	Indep	549	RAHIM BUX SOOMRO(2)	Indep	5212
			SYED AZIZ AHMAD SHAH	JUI(F)	4379
<b>NA-148 RAHEEM YAR KHAN</b>			EUAZ KHAN BHAIO	Indep	333
MAKHDOOM RUKNUDDIN	PPP	43150	AGHA MASIHUDDIN	Indep	307
MAKHDOOM SHAHAB-UD-DIN	IJI	38432	ELLAHI BUX SOOMRO (2)	IJI	174
MAKHDOOM IMAM-UD-DIN	Indep	22167			
MIAN ABDUL KHALIOUE	NPP(Iq	892	<b>NA-156 JACOBABAD</b>		
SYED GHULAM MURTAZA SHAH	TNFJ	142	MOHAMMAD MUOEEM	PPP	68576
			TAJ MOHAMMAD (3)	IJI	5518
<b>NA-149 RAHIM YAR KHAN</b>			GULSHER KHAN	NDP	1043
MIAN ABDUL KHALIQ	IJI	60359	TARIO AZIZ (2)	Indep	308
SHAIKH FAYYAZ-UDDIN	PPP	55615	IMDAD HUSSAIN	Indep	170
MAKHDOOM NOOR MOHAMMAD	PAI	18754	ELLAHI BUX	Indep	128
			AFZAL KHAN	Indep	46

<b>NA-157 JACOBABAD</b>			SARDAR AHMED SULTAN	IJI	16019
MEHRAN KHAN BUARANI	PPP	32121	MAULANA ATTAULLAH	JUI(F)	1864
MIR ALLAH JIWAYA	Indep	23688	MOHAMMAD AZIM	PAI	806
MOHAMMAD YOUSAF	NDP	4197	MOHAMMAD PANNAH	Indep	440
MIR HAKIM ALI KHAN	Indep	331			
ILLAHI BUX	Indep	170	<b>NA-166 LARKANA</b>		
			BENAZIR BHUTTO	PPP	82091
<b>NA-158 NAWABSHAH</b>			MOULANAALI MUHAMMAD HAQANI	JUI(F)	1971
ZAFAR ALI SHAH	PPP	71052	AHMED SULTAN CHANDIO	PMKP	354
GHULAM MUSTAFA	IJI	30848	RIAZ HUSSAIN	Indep	303
GHULAM MUJTABA	Indep	693	MOHAMMAD AYUB	IJI	161
SARFRAZ HUSSAIN SHAH	Indep	379			
GHOUS MOHAMMAD	Indep	127	<b>NA-167 HYDERABAD</b>		
			MAKHDOOM AMIN FAHEEM	PPP	52879
<b>NA-159 NAWABSHAH</b>			SYED SHAHABUDDIN SHAH	Indep	5980
GHULAM ABBAS CHANDIO	PPP	45772			
GHULAM MUSTAFA JATOI	IJI	30772	<b>NA-168 IIYDERABAI)</b>		
MOHAMMAD YOUNIS BEHAN	Indep	1074	AFTAB AHMED SHAIKH	Indep	72877
GHULAM MUSTAFA JAMALI	Indep	440	MAULANA SHAH AHMED NOORANI	PAI	5855
HAJI REHMATULLAH BEHAN	Indep	154	ABDUL WAHEED QURESHI	IJI	5800
KHAN MOHAMMAD KHAN BEHAN	Indep	107	DR. SALEEM HAIDER	Indep	475
			WASI MAZHAR NADVI	Indep	Missing Data
<b>NA-160 NAWABSHAH</b>			MUHAMMAD ZUBAIR	Indep	Missing Data
HAKIM ALI ZARDARI	PPP	35341	ABDUL QAYOOM	Indep	Missing Data
NOOR AHMAD SHAH	IJI	18409	HIDAYATULLAH	Indep	15830
SHABBIR AHMAD	Indep	14125			
SYED ALI ASGHAR SHAH	Indep	14028	<b>NA-169 HYDERABAD</b>		
DIL MURAD	Indep	1297	RASHID AHMAD KHAN	Indep	72236
MOHAMMAD NAZIM KHAWAJA	PAI	780	HAJI MOHAMMAD RASHEED	PPP	21054
			SYED AHAD YOUSUF	IJI	7664
<b>NA-161 NAWABSHAH</b>			DR. SALEEM HAIDER (2)	Indep	1782
SHABIR AHMAD SHAH	PPP	51816	MIRZA ILYAS BAIL	Indep	1592
MOHAMMAD SALEH	IJI	13081	MOHAMMAD SAEED	Indep	274
GHULAM RASOOL	Indep	596	SYED ABID RAZA RIZVI	PAI	226
ABDUL RASHID ALIAS GAGAR	Indep	394	M. HAMZA KHAN	Indep	202
SYED AMIR HUSSAIN SHAH	Indep	270	MAULANA WASI MAZHAR NADVI (2)	Indep	156
PIR MEHBOOBL SHAH RASHIDI	Indep	136	NAWAB M. YAMEEN	Indep	134
GHULAM MUSTAFA SHAH	Indep	116	SHAKEEL AHMAD KHAN	PQMA	72
SYED BASHIR AHMAD SHAH	Indep	100	<b>NA-170 HYDERABAD</b>		

<b>NA-162 KHAIRPUR</b>			QAZI ABDUL MAJID ABID	PPP	45596
SYED PERVEZ ALI SHAH JILANI	PPP	88183	INAYAT ALI KHAN TALPUR	Indep	12517
PIR SYED SHAH MARDAN SHAH	Indep	34400	MIR GHULAMULLAH	Indep	1035
SHAH MOHAMMAD SHEIKH (1)	Indep	576	SYED MOHSAN SHAH	Indep	130
SYED AMJAD ALI SHAH	Indep	517	MUSHTAQ ALI TALPUR	Indep	78
MAULANA BADRUDDIN PHULPOTO	JUI(F)	462	BASHIR AHMED HALEPOTA	Indep	29
			NAWAB ABDUL GHANI TALPUR	Indep	13
<b>NA-163 KHAIRPUR</b>			<b>NA-171 HYDERABAD</b>		
PIR SARDAR ABDUL QADIR SHAH	PPP	78176	MAKHDOOM KHALIQ-UZ-ZAMAN	PPP	61637
PIR SYED SADARUDDIN SHAH	Indep	30248	SYED LIMED ALI SHAH	IJI	22274
ABDUS SALAM	Indep	1339	ABDUL GHANI KHAN	Indep	262
FAZAL MOHAMMAD	Indep	282	MIR ALLAH BUX	Indep	189
			SYED ALI NAWAZ SHAH (2)	Indep	180
<b>NA-164 LARKANA</b>			MIAN WALLI MUHAMMAD	Indep	179
BEGUM NUSRAT BHUTTO	PPP	83929			
HAMEEDA BEGUM	PNP	4504	<b>NA-172 BADIN</b>		
MAULANA JAN MOHAMMAD ABBASI	IJI	2337	HAJI ABDULLAH HALIPOTA	PPP	37611
SHAH MOHAMMAD SHEIKH (2)	JAHP	179	HAJI NAJMUDDIN LAGHARI	IJI	9869
			CH. MOHAMMAD IQBAL (2)	Indep	5699
<b>NA-165 LARKANA</b>			DR. HAJI ABDUL HAQUE NIZAMANI	Indep	450
DR. ASHRAF KHATOON	PPP	63648	WAR ALI	Indep	124
			MUHAMMAD IQBAL	Indep	77
MIR MUSTAQ AHMED	Indep	38	ASHIQ HUSSAIN	IJI	252
			SYED GHULAM SHAH	Indep	192
<b>NA-173 BADIN</b>			<b>NA-179 DADU</b>		
BASHIR AHMAD	PPP	35030	ZAFAR ALI	PPP	62838
HAJI MOHAMMAD (3)	IJI	6987	ABDUL HAMID KHAN	PNP	17789
ALLAH BUX (2)	ANP	6645	MOHAMMAD KHAN	Indep	3731
GHULAM MUSTAFA SHAH (3)	Indep	774	PIR SYED ALI AKBAR SHAH	Indep	191
KHAWAND BUX KHOSO	Indep	278			
PIR MATOOQ ALI SHAH	Indep	212			
MOHAMMAD AHSAN	Indep	125	<b>NA-180 SANGHAR</b>		
MOHAMMED YOUSIF KHAN CHANG	Indep	28	PIR SYED ALI GOHAR SHAH	Indep	52201
			ZAAHOOR ALAM KHAN	PPP	30177
<b>NA-174 THARPARKAR</b>			MUZAFFAR KHAN	UI	660
SYED GURBAN ALI SHAH	PPP	38670	MAULVI ABDUL GHAFFAR	JUI(F)	555
ANEES AHMAD KHAN	Indep	33317			
PIR AFTAB HUSSAIN SHAH JILANI	IJI	17558			
GEN. BASHIR KHAN	Indep	6937	<b>NA-181 SANGHAR</b>		
DR. MASOOM ALI	Indep	877	SHAH NAWAZ JUNEJO	PPP	49766
INAMUDDIN	Indep	867	MOHAMMAD KHAN JUNEJO	UI	30175
HAIDER ALI MUFTI	Indep	311	MOHAMMAD AYOOB	Indep	23573
MOHAMMAD USMAN	Indep	283	MOULVI ABDUL GHANI	JUI(F)	765
CH. MOHAMMAD ASLAM	Indep	158	ABDUL SATTAR GHORI	Indep	304
AMIR BUX	Indep	103	ROSHAN DIN JUNEJO	Indep	266
MOHAMMAD KHAN JUNEJO	AZAD /IJI	101	ABDUL AZIZ GHORI	Indep	248
FAQIR MOHAMMAD	Indep	96	ABDUL SALAM THAHEEM	Indep	182
ABDUL GHAFFAR QURESHI	Indep	92			
QAYYUM SHAHID	Indep	77			
MIR ALI NAWAZ	Indep	61	<b>NA-182 THATHA</b>		
PIR SHAFOAT HUSSAIN SHAH	Indep	44	BABU GHULAM HUSSAIN	PPP	52568
MUHAMMAD AMIN	Indep	42	RASOOL BUX	ANP	9541
			ABDUL HAMID	Indep	1279
			HAJI MANSAB ALI	Indep	217
<b>NA-175 THARPARKAR</b>			AGHA AKBAR ALI KHAN	PNP	138
SYED ALI NAWAZ SHAH	PPP	34107	MOHAMMAD KHAN (2)	Indep	45
HAJI KHAIR MOHAMMAD KHAN	Indep	18239	<b>NA-183 THATHA</b>		

HAJI MOHAMMAD SHAFT	Indep	12143	GHULAM MUSTAFA SHAH	PPP	40248
MIR ALI BUX TALPUR	Indep	656	KHAN MOHAMMAD	Indep	10049
NOOR AHMAD	Indep	565	MOULVI ABDUL GHAFOOR	JUI(F)	4353
MIR GHULAM NABI	Indep	512	MOHAMMAD ARAB	Indep	316
SHABBIR AHMAD	Indep	366	<b>NA-184 KARACHI WEST</b>		
PIR AFTAB HUSSAIN SHAH GILANI	Indep	249	SYED AMIR HAIDER KAZMI	PPP	33582
HUSSAIN ALI SHAH	Indep	240	M. AMIN LAKHANI	Indep	33279
MIR BEHRAM KHAN TALPUR	Indep	235	GHULAM SARWAR MALIK	PPI	28997
GHULAB KHAN QAIM KHANI	PAI	201	MOHAMMAD ASHRAF (2)	Indep	5030
GHULAM AKBAR	Indep	123	MOULANA ABDUL RAZZAQ AZIZ	JUI(F)	3892
GHULAM MUSTAFA KHASKHALI	Indep	53	HAJI MOHAMMAD SHAIR KHAN	ANP	2634
<b>NA-176 THARPARKAR</b>			M. AZAM KHAN	Indep	1116
ARBAB AMIR HASSAN	Indep	40797	SUFI M. AYAZ KHAN NIAZI	PAI	618
GUL MOHAMMAD MEMON	PPP	37723	MOHAMMAD ISHAQ	Indep	542
JAM SAQI	Indep	1753	FATAH SHAIR KHAN	Indep	131
MURAD ALI	Indep	812	<b>NA-185 KARACHI WEST</b>		
HAJI GHULAM MOHAMMAD	Indep	464	SYED SALEEM-UL HAQ	Indep	80269
<b>NA-177 DADU</b>			AFAQ SHAHID	PPP	18548
MALIK ASSAD SIKANDAR	PPP	60489	HAJI GHULAM HUSSAIN	ANP	9352
M. RAHMAT KHAN	Indep	9865	AZAD BIN HAIDER	Indep	8941
SYED BACHAL SHAH	Indep	633	SYED ALEEMUDDIN AHMAD	Indep	1224
S.M. YOUSIF	Indep	486	NAEEM-UL-HAQ	PAI	815
HUSSAIN SHAH RASHDI	Indep	212	MOHAMMAD RAZIQ KHAN	Indep	812
PEER BUX	Indep	96	SALEH MOHAMMAD	PMAI /	395
<b>NA-178 DADU</b>			MOHAMMAD MUNNAN SHAMSI	Indep	94
HAJI MOHAMMAD BAKASHF	PPP	63455	SHAIKH M.ZAHEERUDDIN BABAR	Indep	88
LIAQUAT ALI	PNP	12054			
<b>NA-186 KARACHI CENTRAL</b>			TARIQ SAEED	PAI	1485
KANWAR KHALID YUNIS	Indep	88331	GHULAM MURTAZA DURRANI	Indep	866
PROF. GHAFOOR AHMAD	IJI	22126	WAHAJ-UD-DIN CHISHTI	Indep	194
SYED AMIR HAIDER KAZMI (2)	PPP	9808	MOHAMMAD HUSSAIN (1)	Indep	111
NOOR-UL-HUDA	JUI(F)	3147	ZAFAR AZIZ BAJWA	Indep	89
MOHAMMAD ASIF QASMI	Indep	517	EHTARAM-UL-HAQ THANVI	Indep	48
G.M.K. PASHA	PML(Q)	282	ABDUL SATTAR (3)	Indep	44
MOHAMMAD SHAHID	Indep	161			
<b>NA-187 KARACHI CENTRAL</b>			<b>NA-193 KARACHI EAST</b>		
IMRAN FAROOQ	Indep	93483	SYED MOHAMMAD ZAKRIYA KAZMI	Indep	61979
MUZAFFAR AHMED HASHMI	IJI	12117	SYED MUNAWAR HASSAN	IJI	18032
SHAHID IQBAL	PPP	5955	ABDUL HAMEED KHANZADA	PPI	13733
PROF.SHAH FARID-UL-HAQ	PAI	3375	FATEH YAB ALI KHAN	Indep	3069
SYED HASHIM ALI	Indep	321	MIAN SUAZ SHAFT	Indep	679
ARIF HUSSAIN QASMI	Indep	123	JAVED AHMED SIDDIQUI	PAI	577
			SHAMIM PASHA	Indep	517
			ABDUL RAZZAQ RAJWANI	Indep	334
<b>NA-188 KARACHI CENTRA</b>			KHALI AHMAD	Indep	293
MOHAMMAD ASLAM (2)	Indep	131009	SYED LAIQ AHMAD	Indep	163
MOHAMMAD USMAN RAMZ	IJI	18244	DR. MOHAMMAD RAMZAN	Indep	118
RAFI-UD-DIN BURNEY	PPP	8265	ZAIN-UL-ABIDEEN	Indep	45
MAULANA JAMIL AHMED NAIMI	PAI	2414	S. M. ASLAM	Indep	45
<b>NA-189 KARACHI SOUTH</b>			<b>NA-194 KARACHI EAST</b>		
BE NAZIR BHUTTO	PPP	61766	SYED IQBAL HAIDER	PPP	13576
D AHMAD KHAN	IJI	10751	MOHAMMAD YOUNAS	Indep	7770
MOHAMMAD RAFIQ (2)	Indep	7593	KHAWAJA MOHAMMAD SHARFUL ISLAM	IJI	6284
MOHAMMAD YOU MS BALUCH	PNP	8296	PROF.SHAH FARID-UL-HAQ (2)	PAI	2020
ZABIH-ULLAH	PPIS /	3047	MOHAMMAD AMIN I	Indep	343
MOHAMMAD YOUSIF	Indep	5002	KHAN MIRAJ MOHAMMAD KHAN	Indep	224
HAJI MOHAMMAD RAMZAN	Indep	888	MOHAMMAD BASHIR	Indep	150
M. MUJEEB-UR-RAHMAN SIDDIQI	PML(Q)	344	MOHAMMAD ASLAM MUJAHID	Indep	90
TAJ-UD-DIN	Indep	194	<b>NA-193 KARACHI EAST</b>		
			MAHMOOD-UL-HUSSAIN	Indep	58595
<b>NA-190 KARACHI SOUTH</b>			PROF.N.D.KHAN	PPP	24043
MOHAMMAD FAROOQ SATTAR	Indep	40716	FIADAUR REHMAN DARKHAWASTI	IJI	12709

HABIB	Indep	32086	HAJI MOHAMMAD HASHIM KHAN	PPI	7278
MOHAMMAD HUSSAIN MEHANTI	IJI	15947	FAZAL WADOOD KHATTAK	ANP	4164
ALLAMA SHAH AHMED NOORANI(2)	PAI	9885	UMAR FAROOQ KHAN ADVOCATE	PAI	1197
MOHAMMAD HUSSAIN	Indep	504	MERAJ MOHAMMAD KHAN (2)	Indep	689
MOHAMMAD ILYAS SIDDIQUI	Indep	199	NAZIR AHMAD	Indep	352
ABDUL SATTAR (2)	Indep	117	ALI KHAN JOKHIO	Indep	288
			UMAR HAYAT KHAN NIAZI	Indep	111
<b>NA-191 KARACHI SOUTH</b>			<b>NA-196 KARACHI EAST</b>		
SYED TARIQ MAHMOOD	Indep	36816	WASEEM AHMAD	Indep	75134
GHULAM SARWAR MALIK(1)	PPI	28142	SYED SAGHIR HUSSAIN JAFRI	PPP	31944
TARIQ SUHAIL	PPP	12734	SHEHZAD TARIQ	PPI	14255
SHEIKH ABDUL KHALIQ ALLAHWALA	IJI	4490	SYED ZAHEER-UL-HASAN JILANI	PAI	950
KHALEEFA ANWAAR AHMAD	Indep	1498	SYED ZAKIR ALI	Indep	301
KHAN AMANULLAH KHAN	PML(Q)	1498	HAJI MOHAMMAD RAMZAN (2)	Indep	280
AIR MARSHAL (RTD) ASGHAR KHAN	PAI	1301	SHAHARYAR MIRZA	NDP	148
DR. ANWAR ABBAS NAQVI	Indep	324	SYED MOHAMMAD IBNE HUSSAIN	TNFJ	131
SALEEM ZIA	Indep	321			
FEROZ AHMAD	Indep	148			
NAFEES AHMAD SIDDIQUI	Indep	114	<b>NA-197 QUETTA</b>		
MOHAMMAD YOUSAF	Indep	79	HAFIZ HUSSAIN AHMAD	JUI(F)	22668
MIAN MWEEB-UR-REHMAN	Indep	8	SARDAR FATEH MOHAMMED,M.HASNI	IJI	19713
			SARDAR RAZA MUHAMMAD KHAN	PMAI	12613
<b>NA-192 KARACHI EAST</b>			ABDULWAHEED	BNA	12406
FAROOQ SATTAR	Indep	57578	SARDAR AHMAD NAWAZ KHAN	PNP	11453
PIYAR ALI ALANA	PPP	13788	DR. INNAYAT ULLAH KHAN	ANP	6303
ZUHAIR AKRAM NADEEM	IJI	13555	YAHYA AR	PPP	1202
MOHAMMAD ASLAM NOORIDDING	Indep	4376	KHUDA-E-NOOR	PAI	1132
			ALI AHMAD KURD	Indep	648

HAJI WALT MOHAMMAD	Indep	599	<b>NA-203 JAFFARABAD</b>		
SARDAR NADIR KHAN	Indep	406	MIR ZAFARULLAH KHAN	IJI	49677
MOHAMMAD AKBAR	Indep	265	MIR NABI BAKHSH KHOSA	Indep	17047
NAWABZADA AURANGZEB JOGIZAI	Indep	124	TAJ MOHAMMAD SHAH	JUI(F)	2064
			MIR HAJI SHAH NAWAZ KHAN	PPP	815
<b>NA-198 PISHIN</b>			MIR MOHAMMAD AKBAR KHAN	Indep	780
MOLVI ABDUL GHANI	JUI(F)	24552	JAHANGIR KHAN	Indep	520
DR. KALEEM ULLAH	PMAI	19262			
MOHAMMAD SARWAR KHAN	IJI	10564	<b>NA-204 QALLAT</b>		
AZIZ-UL-LAH	ANP	5932	MOLVI MOHAMMAD SIDDIQUE SHAH	JUI(F)	19105
AMIN ULLAH KHAN	Indep	1761	MOHIM KHAN	BNA	5594
BISMILLAH KHAN	PNP	632	MOULVI HABIB AHMED NAQSHBANDI	PAI	4912
PARADIN KHAN TARIN	PPP	565	HAJI NASEER AHMAD BANGALZAI	PPP	4415
MAHMOOD AHMAD	Indep	527	SARDAR BAHAWAL KHAN	Indep	3604
HAJI ABDUL ZAHIR	Indep	373	PRINCE MOHEYUDDIN	IJI	2734
MALIK AMIR JAN	Indep	343	MALIK HAJI ABDUS SAMAD	PNP	826
MOHAMMAD AKRAM KHAN	Indep	305	ISRAR-UL-LAH	Indep	526
			ABDUL HAQ	Indep	429
<b>NA-199 LORALAI</b>			HAJI SHAH SALEEM	Indep	320
BAZ MOHAMMAD MIR	PPP	11351			
KHALIQ DAD MOLVI	JUI(D)	11269	<b>NA-205 KHUZDAR</b>		
MOHAMMAD YAQUB KHAN SARDAR	IJI	10902	MIR MOHAMMAD ARIF JAN	BNA	15011
MOLVI ABDUL AZIZ	JUI(F)	9301	MIR GHOUS BUX BAZINJO	PNP	11676
MIR HAJI TAREEN	Indep	4709	MOLVI QAMARUDDIN	JUI(F)	8713
UBAID-UL-LAH JAN	PMAI	1845	MIR GOHAR KHAN	Indep	4792
ABDUR REHMAN	ANP	1380	ABDUL MAJEED ANSARI	Indep	802
SAID MOHAMMAD	Indep	1262	QARI ABDUL RASHID	Indep	374
QAISAR KHAN	Indep	282	KHAIR JAN BALUCH	IJI	183
SIKANDAR HAYAT KHAN	Indep	266			
ABDUL GHAFFAR KHAN	Indep	248			
MOHAMMAD NAWAZ	PNP	241	<b>NA-206 LASBELLA</b>		
			GHULAM AKBAR (2)	IJI	17396
<b>NA-200 ZHOB</b>			SHERJAN	PNP	16756
MOHAMMAD KHAN MOLVI	JUI(F)	13076	ABDUR RAHEEM ZAFAR	Indep	10128
ALLAH DAD MOLVI	JUI(D)	5175	MOHAMMAD AKHTAR	BNA	8329
MOHAMMAD USMAN KAKAR	PMAI	2988	KARIM BUX	Indep	587
WAZIR AHMAD JOGEZAI	IJI	2266	AMAN ULLAH GICHKI	Indep	560
ALLAH DAD HAJI	Indep	1390	NABI BAKHSH	Indep	397
MOHAMMAD YAR KHAN SHAIKH	ANP	1370			
HAYAT-ULLAH KHAN SARDAR	PPP	1061	<b>NA-207 TURBAT</b>		
BAZ MOHAMMAD KHAN MALIK	Indep	597	MANZOOR AHMAD GICHKI	BNA	16016
AHMAD YAR KHAN JOGIZAI	Indep	357	GHAUS BUX BAZINJO	PNP	11985
QUTAB KHAN SARDAR	Indep	295	AMANULLAH GICHKI	PPP	8523
NOOR MOHAMMAD SHERANI HAJI	PNP	173	MIR MOHAMMAD ALI	IJI	6011
			RASOOL BUX (1)	Indep	1250
<b>NA-201 KACHI</b>			WAJA MOHAMMAD HUSSAIN	Indep	179
TARIQ HUSSAIN MIR MAGSI	Indep	21568			
DR. ABDUL HAI BALUCH	BNA	12707			
MOHAMMAD ISMAIL MIR SATAKZAI	PPP	3763			
DHANI BUX SARDAR LASHARI	PNP	1922			
SHAH NAWAZ KHAN KURD	Inaep	1486			
HAJI MOHAMMAD AYUB BANGLEZAI	JUI(F)	1351			
MOHAMMAD RAMZAN MALIK BALOCH	Indep	403			
ELLAHI BUX MIR MAGSI	Indep	173			
<b>NA-202 SIBBI</b>					
SALEEM AKBAR BUGTI	Indep	16740			

GHULAM QADIR BUGTI	Indep	7480		
<b>NA-202 SIBBI</b>				
ABDUL RAHIM	PMAI	7473		
MIR NIHALAN	IJI	2302		
MOULA DAD	ANP	1382		

<b>NA-140 LAYYAH</b>			<b>NA-167 HYDERABAD</b>		
SAHIBZADA FAIZ-UL-HASSAN	LII	31452	MAKHDOOM AMIN FAHEEM	PPP	52879
SARDAR BEHRAM KHAN	PPP	28281	SYED SHAHABUDDIN SHAH	Indep	15980
CH. NOOR AHMAD	Indep	23173			
SYED IFTIKHAR HUSSAIN NAQVI	TNFJ	6298			
MOHAMMAD JAHANGIR KHAN	Indep	213	<b>NA-184 KARACHI WEST</b>		
			SYED AMIR HAIDER KAZMI	PPP	33582
			M. AMIN LAKHANI	Indep	33279
<b>NA-142 BAHAWALPUR</b>			GHULAM SARWAR MALIK	PPI	28997
FAROOQ AZAM	PPP	53328	HAJI MOHAMMAD SHAIR KHAN	ANP	12634
MOHAMMAD IQBAL ATHAR	IJI	32615	MOHAMMAD ASHRAF	Indep	5030
TAHIRA KHAN	PAI	11724	MOULANA ABDUL RAZZAQ AZIZ	JUI(F)	3892
CH. ABDUL MAJID	Indep	10804	M. AZAM KHAN	Indep	1116
MOHAMMAD NASIR	NPP(K)	2884	FATAH SHAIR KHAN	Indep	1031
MOULVI AHMAD HASSAN	JUI(F)	1766	SUFI M. AYAZ KHAN NIAZI	PAI	618
SARDAR MOHAMMAD ASLAM KHAN	Indep	1225	MOHAMMAD ISHAQ	Indep	542
SYED SALMAN GARDEZI	Indep	563			
MUMTAZ AHMAD JAJJA	Indep	476			
MALIKTAHIR MAHMOOD	Indep	343	<b>NA-194 KARACHI EAST</b>		
			SYED AMIN-UL-HAQ	Indep	60469
			SYED IQBAL HAIDER	PPP	13576
<b>NA-145 BAHAWALNAGAR</b>			KHAWAJA MOHAMMAD SHARFUL ISLAM	IJI	6284
MIAN ABDUS SATTAR KHAN	IJI	82764	PROF.SHAH FARID-UL-HAQ	PAI	2020
MALIK MOHAMMAD QASIM	PML(Q)	54986	MOHAMMAD AMIN LAKHANI	Indep	343
SAHIBZADA NOOR HASSAN	Indep	3120	MIRAJ MOHAMMAD KHAN	PQMA	224
HAFIZ MIAN MOHD.SALEEM MOHARVI	PAI	2679	MOHAMMAD BASHIR	Indep	150
SULTAN AHMAD	Indep	2651	MOHAMMAD ASLAM MUJAHID	Indep	92
MIAN MOHAMMAD KHALID LALIKA	JAHP	2583			
MIAN MOHAMMAD TAYYAB WATTO	Indep	550			

Note:

This ERRATA does not include corrections of minor errors, which will be attended to in the final version of Election Results based on official results released by the Election Commission.



## ELECTION RESULTS NATIONAL ASSEMBLY 1988

### ERRATA

The special issue of the Gallup Political Weather Report (November 1988) titled **PAKISTAN AT THE POLLS** included a preliminary reproduction of the National Assembly Results. Certain typing errors could not be corrected before the final printing. Besides, in a few cases certain data were missing. Please makes the following correction.

The statistical analysis of the same data were based on correct figures, and hence do not need revision.

**WE SUGGEST THAT YOU MAY ENCIRCLE THE FOLLOWING SEAT NUMBERS IN YOU ORIGINAL REPORT AND REFER TO THE ERRATA FOR THE SAME.**

#### NA-16 MANSEHRA

HAJI MOHAMMAD AYUB KHAN	LJI	8282
ALAM ZEB KHAN	Indep	8236
MOHAMMAD FAYYAZ KHAN	Indep	5315
ABDUL BAR SHAH	Indep	3930
HAJI FAQIR MOHAMMAD KHAN	JUI(F)	3336
TOOTI KHAN	Indep	640
MOHAMMAD QOWAT KHAN	PAI	614

#### NA-18 D.I. KHAN

MAULANA FAZAL-UR-REHMAN	JUI(F)	62052
FAZAL KARIM KHAN	UI	35226
SYED HASSAN ALI KAZMI	TNFJ	16369
UMAR FAROOQ KHAN	Indep	15253
ASMATULI.AH	PAI	13159
AMANULLAH KHAN	Indep	6589
RAB NAWAZ	Indep	96

#### NA-64 FAISALABAD

AHMAD SAEED AWAN	PPP	54499
MIAN ZAHID SARFRAZ	Indep	49602
RAJA NADIR PERVEZ	Indep	6688
QARI ABDUL HAFEEZ	JAHP	1513
M. NASEEM ARTIST	PAI	941

MOHAMMAD NASIR DIN	JUI(D)	647
SHEIKH MATLOOB HUSSAIN	TNFJ	394
HAJI ABDUL MAJID IBRANI	Indep	369

ABDUL JABBAR	Indep	348
QARI MOHAMMAD SAEED CHISHTI	Indep	159

#### NA-71 T.T. SINGH

CH. ASADU-UR-REHMAN	LII	65430
KHAUD AHMED KHAN	PPP	50811
MOHAMMAD BASHIR KHAN	PAI	2037
AZRA KHAN	fndep	1427
CH. MOHAMMAD YOUSAF JAVED	Indep	1382
RAI OBAID-UL-LAH KHAN	Indep	1282
MOHAMMAD RIAZ	Indep	474
MAJOR (RETD) AHMAD NAWAZ	Indep	299
SARDAR KHURSHID ANWAR	Indep	138

#### NA-88 SIALKOT

MIAN NAWAZ SHARIF	Lii	44855
CH. ASAD-UL-LAH KHAN BAJWA	PDP	30892
SAHIBZADA MOHAMMAD AHMED	PAI	19805
MOHAMMAD SIKANDAR KHAN	Indep	1966
MOHAMMAD BASHIR	Indep	1741

#### NA-137 MUZAFFARGARH

GHULAM MOHAMMAD MUSTAFA KHAR	NPP(K)	48511
MALIK GHULAM M. FAKHR-UL-ISLAM ARBI	UI	17369
SARDAR MANZOOR AHMAD KHAN	PPP	9776
MIAN MUZAFFAR MEHDI HASHMI	PAI	2129
MALIK GHUIAM MOHD MURTAZA KHAR	Indep	1459
ABAUER REHMAN	Indep	940
ARSHAD MAHMOOD KHAN	Indep	485
GHULAM MOHAMMAD NOOR RABBANI K	Indep	293
DR. SYED ATHAR MEHDI KAZMI	Indep	237
MOHAMMAD ASGHAR	Indep	103

INAM KARIM	PDP	65
------------	-----	----



## **ABBREVIATIONS**

• ANP	Awami National Party
• ANP (A)	Awami National Party (Ainc Group)
• BNA	Baluchistan National Alliance.
• IJI	Islami Jamhoori Itchad
• Indep	Independent
• JAI-IP	Jamiat Ahie Hadis Pakistan
• JUI (D)	Jamiat Ulma-c-Islam (Darkhawasti Group)
• JUI (F)	Jamiat Ulma-e-Islam (Fazlur Rahman Group)
• MII	Mahaz-c-I-Iazara (Hazara Front)
• NDP	National Democratic Party
• NML (N I)	National Muslim League (Mahasba Group)
• NPP (K)	National People's Party (Khar Group)
• PAI	Pakistan Awami Itchad
• PDP	Pakistan Democratic Party
• PMAI	Pakistan Milli Awami Itchad (Pakhtoon Khaw)
• PMKP	Pakistan Mazdoor Kisan Party
• PML (F)	Pakistan Muslim League (Forward Group)
• PML (Q)	Pakistan Muslim League (Qasim Group)
• PNDA	Pakistan National Democratic Alliance
• PNP	Pakistan National Party
• PPI	Punjabi Pakhtoon Itchad
• PPP	Pakistan People's Party
• PQMA	Pakistan Qomi Mahaz-c-Azadi
• TIIP	Tehrik Inqalab-c-Islam (Pakistan)
• TNFJ	Tehrik Nifaz-c-Figa Jafaria
• WP	Watan Party

## **APPENDIX 2**

### **SAMPLE COMPOSITION**

The sample comprises of 3075 voters spread all over the four provinces in the country, roughly proportional to their size in the population. The selection of the seats and the polling stations in those seats was done through a random process. Further the voters were selected through time sampling. At each station the voter leaving his booth on every 15th minute after the start of interviewing was selected for the survey. This process was adopted in order to prevent any interviewer bias in the selection of the respondents. On these grounds, the sample could be considered as a cross-section of the MALE VOTERS who voted in Pakistan's National Assembly elections on November 16, 1988.

The sample achieved in this manner, was further weighted to conform very closely to the rural-urban and provincial composition in the country.

For results based on samples of this size, one can say with 95% confidence that the error attributable to sampling and other random effects could be plus or minus 2 percentage points.

## Questionnaire

- Q 1) In your opinion, what is the biggest problem facing Pakistan at the moment?
- Q 2) Which Newspaper do you usually read?  
a. Newspaper Name: \_\_\_\_\_  
b. Whichever I can get
- Q 3) How many days a week do you listen to radio?  
a. No of days (Per week) \_\_\_\_\_  
b. Rarely  
c. Do not listen to radio
- Q 4) How many days a week do you watch television?  
a. No of days (Per week) \_\_\_\_\_  
b. Rarely  
c. Do not watch television
- Q 5) Some people take active part in elections campaigning, e.g., by attending a rally or supporting a candidate, while others show no interest in such activities. What is your position?  
a. Take active part in politics  
b. Participate to some extent  
c. Do not participate in politics at all
- Q 6) Which of the following option would you say you had a chance to do in recent elections campaigning?  
a. Had a chance to gather votes/do some convincing in favor of a candidate  
b. Had a chance to participate in a rally/ listen to a speech  
c. Had a chance to hoist the flag of some party on my house/ shop or vehicle  
d. Had a chance to help organize a rally  
e. Had a chance to deliver a speech in a rally
- Q 7) If you are given an option, which ONE of the following candidates would you choose to be the next prime minister?  
a. Benazir Bhutto  
b. Nawaz Sharif  
c. Nusrat Bhutto  
d. Muhammad Kahn Junejo  
e. Qazi Hussain Ahmed  
f. Ghulam Mustafa Jatoi  
g. Other: \_\_\_\_\_  
h. DK/NA
- Q 8) Who did you just vote for in national assembly elections today?  
a. Name of the Candidate: \_\_\_\_\_

b. Election Symbol: \_\_\_\_\_

Q 9) Did you cast your vote in 1970 elections?

- a. Yes
- b. No

Q 10) (a) If yes, then which party did you vote for?

- a. PPP
- b. PML
- c. Jamat-e-Islami
- d. Other: \_\_\_\_\_

Q 11) Who did you vote for in 1977 elections?

- a. PPP
- b. National alliance
- c. Independent candidate
- d. Did not vote
- e. Other: \_\_\_\_\_

Q 12) Which of the following do you think was the biggest reason behind casting your vote for the candidate you voted for? (Pick ONE)

- a. Party Preference
- b. Personal traits of the candidate
- c. Biradri/clan's choice
- d. Other: \_\_\_\_\_

Only For IJI (Bicycle) Voters

Q 13) Islamic coalition gave plenty of arguments in its favor. Which ONE of these convinced you to vote for it?

- a. IJI is the guardian of the atomic Program (Kahutta)
- b. IJI protects an independent Afghanistan and Kashmir
- c. IJI can stop the revival of PPP era
- d. IJI leadership is strong and masculine
- e. IJI is more Islamic than PPP
- f. Other: \_\_\_\_\_

Only For PPP (Arrow) Voters

Q 14) PPP gave plenty of arguments in its favor. Which ONE of these convinced you to vote for it?

- a. PPP is the party of late Zulfikar Ali Bhutto
- b. People's party is the party of the poor
- c. People's party will put an end to Zia-ul-haq era
- d. Benazir Bhutto is a charismatic leader
- e. Other: \_\_\_\_\_