

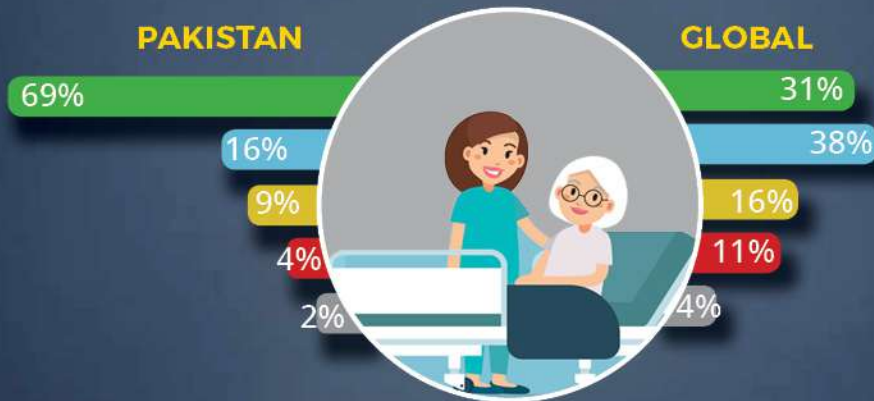
**85% Pakistanis believe it to be a child's duty to take care of ill parents, compared to the global average of 69%. (World Values Survey and Gallup & Gilani Pakistan)**

85% پاکستانی بیمار والدین کی دیکھ بھال کرنا ایک بچے کا فرض سمجھتے ہیں، اس کی نسبت دنیا بھر میں کی شرح 69% ہے۔

*Do you think it is a child's duty to take care of ill parent?*

**PAKISTAN**

**GLOBAL**



- Strongly Agree
- Agree
- Neither agree nor disagree
- Disagree
- Strongly Disagree

Don't Know / No response not shown



Opinion Poll

WORLD VALUES SURVEY

Social Behaviour

85% Pakistanis believe it to be a child’s duty to take care of ill parents, compared to the global average of 69%. (World Values Survey and Gallup & Gilani Pakistan)

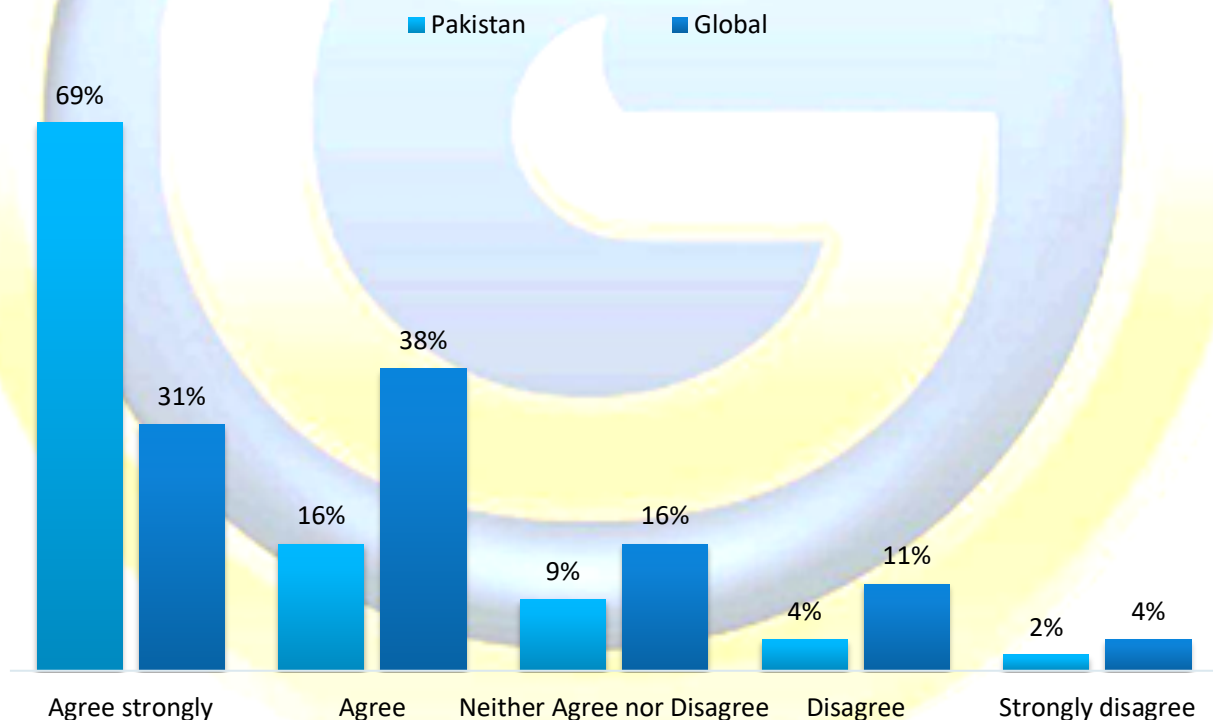
Islamabad, 22<sup>nd</sup> September, 2020

According to a World Values Survey and Gallup & Gilani Pakistan Poll, 85% Pakistanis believe it to be a child’s duty to take care of ill parents, compared to the global average of 69%.

A nationally representative sample of adult men and women from across the four provinces was asked the following question, “Do you think it is a child’s duty to take care of ill parent?” In response to this question, 69% strongly agreed, 16% agreed, 9% neither agreed nor disagreed, 4% disagreed and 2% strongly disagreed.

**Global Results:** Globally, 31% strongly agreed, 38% agreed, 16% neither agreed nor disagreed, 11% disagreed and 4% strongly disagreed that it is a child’s duty to take care of their ill parent.

Question: “Do you think it is a child’s duty to take care of ill parent?”



Note: Don't Know/ No Response not shown

Source: World Value Survey 2017-2020, Gallup & Gilani Pakistan Poll

The Pakistani affiliate of Gallup International Association

[www.gallup-international.com](http://www.gallup-international.com), [www.gallup.com.pk](http://www.gallup.com.pk), [www.gilanifoundation.com](http://www.gilanifoundation.com)

<https://www.worldvaluessurvey.org>

The study was released by World Values Survey and carried out by Gallup & Gilani Pakistan, the Pakistani affiliate of Gallup International. The survey was carried out among a sample of 1995 men and women in urban and rural areas of all four provinces of the country, between 2017 and 2019. The global sample was 125,098. The error margin is estimated to be approximately ± 2-3 percent at the 95% confidence level. The data released by World Values Survey can be accessed at <https://www.worldvaluessurvey.org/WVSONline.jsp>



*Opinion Poll from Gallup Pakistan  
The Pakistani Affiliate of Gallup  
International*



**Tuesday, September 22<sup>nd</sup>, 2020**

*(3 Pages, English version only)*

***Gilani Research Foundation is a not for profit public service project to provide social science research to students, academia, policy makers and concerned citizens in Pakistan and across the globe.***

*Gilani Research Foundation is headed by Dr. Ijaz Shafi Gilani who pioneered the field of opinion polling in Pakistan and established Gallup Pakistan in 1980. Currently Dr. Gilani, who holds a PhD from the Massachusetts Institute of Technology (MIT) and has taught at leading universities in Pakistan and abroad, is Chairman of Gallup Pakistan.*

Phone: +92-51-2655630

E-mail: [caf@gallup.com.pk](mailto:caf@gallup.com.pk)

***Disclaimer:*** Gallup Pakistan is not related to Gallup Inc. headquartered in Washington D.C. USA. We require that our surveys be credited fully as Gallup Pakistan (not Gallup or Gallup Poll). We disclaim any responsibility for surveys pertaining to Pakistani public opinion except those carried out by Gallup Pakistan, the Pakistani affiliate of Gallup International Association. For details on Gallup International Association see website: [www.gallup-international.com](http://www.gallup-international.com)



Daily Gilani Poll  
2020



of Gallup Pakistan  
(1980-2020)